

STERLING[®]

separation

Product and Price information

Valid from **August 1st 2024**



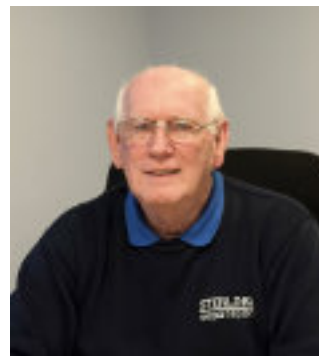
All information is current at the date of issue. However, things can change! So to verify the latest information and to see any product additions, changes or updates, new electronic copies of this list may be downloaded from www.sterlingsep.com where you can also get brochures and manuals in the 'Support' section. Of course, if there are major changes we'll notify you directly.

We've prepared this document carefully, but it's possible that errors may have got through our checks. So, we reserve the right to review and possibly refuse orders based on incorrect information. We will not be held responsible for costs incurred due to errors in this list, nor for incorrect use of it. We urge users to check prices and specifications directly with us if in any doubt.

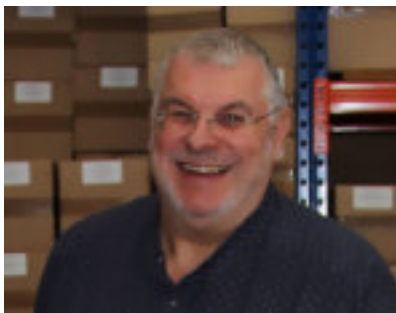
About us



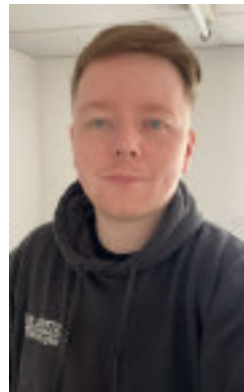
Mike Amphlett (Director/owner) has been involved in senior positions in our industry since 1994, both in the UK and abroad. Years of experience to provide you with the best product possible.



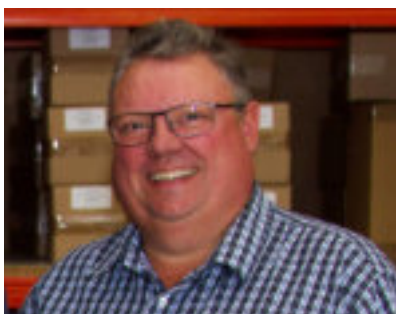
John Gillen (Logistics Manager) is a logistics and distribution professional, originally trained as a mechanical engineer. With years of experience in senior positions in blue chip companies, John certainly knows how to get product out the door efficiently.



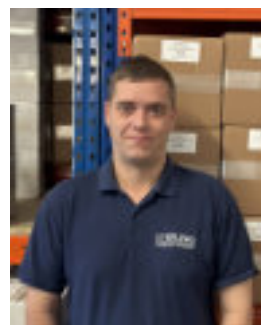
Richard Turner (Director/owner) has been part of the compressed air industry for many years, as a manufacturer and a distributor, which gives STERLING a powerful perspective on customer needs.



David Wood (Marketing Support) studied in computer science to obtain a HND before moving into the repair of electronic items such as computers and mobile devices. Moved to STERLING to take up an IT and marketing role.



Dennis Winder (Owner/Sales Manager) is a well known character in our industry. Dennis has a wealth of practical knowledge on all matters to do with compressed air and condensate management, which he delivers in his own uniquely straightforward and humorous style.



Mark Wood (Logistics Co-ordinator) originally trained in motor vehicle mechanics, Mark swiftly moved into Logistics and has over 8 years experience within logistics and compressed air distribution.

Main Index

STERLING oil/water separators

Page 4 - 5

Specifications

Page 4

Service kits

Page 6

Accessories

Page 6



Condensate drains

Page 7

Zero loss drains

Page 8

Zero loss drains

Page 9

Float & hybrid drains

Page 10

Extra heavy duty float drain

Page 11

Timed drains (TD15 & CS720)

Page 12



3rd party service kits for OWS (Index)

Page 13 - 22



Compressed air filtration

STERLING Premium Range

Page 23 - 25

STERLING Original Range

Page 26 - 28

STERLING Cyclone Range

Page 29

Filter housing drains

Page 30

Alternative air filter elements (Index)

Page 31



AirDryers

Page 45 - 48

Other Services

Page 49

Terms & Conditions

Page 50 - 51

Company details

Page 52



Oil/Water Separators

STERLING oil/water separators are designed for clean efficient operation, assisting users to maintain their compliance with environmental legislation.

By building on established principles and adding function and quality with creative design, STERLING commits to producing products that equal or exceed the needs of their customers and of the market in general.

CS75

The world's smallest, least expensive, serviceable oil/water separator with tens of thousands of successful installations.
Suitable for compressors up to 11 kW



CSR150 to CSR3000

Easy to select, install, maintain and service, STERLING's design offers high quality all round, 'time-in- service' indication, and flexible installation options offering better use of space for larger installations in space-restricted plant rooms.

There are 5 sizes available for installations from 15kW to 450kW



CS100IBC & CS200IBC

Using the same technologies as our standard separators, these IBC-based units are the efficient answer to large scale condensate problems - and last up to 16,000 hours between services.

There are 2 sizes available for installations from 500kW to 1000kW



STERLING oil/water separator specifications

Model	Capacity cfm - (m ³ /min)	Max service life (hrs)	Height (mm)	Width (mm)	Depth (mm)	Outlet c/l height (mm)	Weight (kg)	Service kit code
CS75	75 - (2.1)	4000	270	185	195	185	2	CS75SK
CSR150	150 - (4.2)	4000	560	220	255	240	3.4	CSR150SK
CSR450	450 - (12.7)	4000	750	310	335	352	4.5	CSR450SK
CSR1000	1000 - (28.3)	4000	980	400	430	433	16	CSR1000SK
CSR2000	2000 - (56.6)	4000	980	900 appx	430	433	35	CSR2000SK
CSR3000	3000 - (85)	4000	980	1400 appx	430	433	51	CSR3000SK
CSR150-AF	150 - (4.2)	2000-4000	560	220	255	240	3.4	CSR150SKAF
CSR450-AF	450 - (12.7)	2000-4000	750	310	335	352	4.5	CSR450SKAF
CSR1000-AF	1000 - (28.3)	2000-4000	980	400	430	433	16	CSR1000SKAF
CSR2000-AF	2000 - (56.6)	2000-4000	980	900 appx	430	433	35	CSR2000SKAF
CSR3000-AF	3000 - (85)	2000-4000	980	1400 appx	430	433	51	CSR3000SKAF
CS100IBC	3500 - (100)	16,000	1350	800	1270	650	650	CSR100IBCK
CS200IBC	7000 - (200)	16,000	1520	1000	1270	750	1060	CSR200IBCK

Accessories

CSR150STD & CSR450STD	Stand. Raises the separator by ~300mm where access to drain needs extra slope
CSEQ3	Divides condensate flow into 2 or 3 ~equal parts for efficient multi-separator installations

Sterling Oil/Water Separators



Capacity cfm - (m ³ /min)	Product Code	Description	List Price	5 off	10 off
75 - (2.1)	CS75 CS75-GREY CS75-YELLOW	CS75 OWS, BLUE, GREY OR YELLOW, c/w wall mount, STERLING label, Metric	£110.00	£92.84 Each	£86.24 Each
150 - (4.2)	CSR150 CSR150_G CSR150_Y	Oil water separator - 150cfm, BLUE, GREY OR YELLOW	£365		
	CSR150-AF CSR150AF_G CSR150AF_Y	Oil water separator - 150cfm, Active Filter, BLUE, GREY OR YELLOW	£475		
450 - (12.7)	CSR450 CSR450_G CSR450_Y	Oil water separator - 450cfm, BLUE, GREY OR YELLOW	£552		
	CSR450-AF CSR450AF_G CSR450AF_Y	Oil water separator - 450cfm, Active Filter, BLUE, GREY OR YELLOW	£718		
1000 - (28.3)	CSR1000 CSR1000_G CSR1000_Y	Oil water separator - 1000cfm, BLUE, GREY OR YELLOW	£806		
	CSR1000-AF CSR1000AF_G CSR1000AF_Y	Oil water separator - 1000cfm, Active Filter, BLUE, GREY OR YELLOW	£1026		
2000 - (56.6)	CSR2000 CSR2000_G CSR2000_Y	Oil water separator - 2000cfm - 2*CSR1000 + CSEQ3, BLUE, GREY OR YELLOW	£1831		
	CSR2000-AF CSR2000AF_G CSR2000AF_Y	Oil water separator - 2000cfm - 2*CSR1000 + CSEQ3, Active Filter, BLUE, GREY OR YELLOW	£2283		
3000 - (85)	CSR3000 CSR3000_G CSR3000_Y	Oil water separator - 2000cfm - 2*CSR1000 + CSEQ3, BLUE, GREY OR YELLOW	£2636		
	CSR3000-AF CSR3000AF_G CSR3000AF_Y	Oil water separator - 2000cfm - 2*CSR1000 + CSEQ3, Active Filter, BLUE, GREY OR YELLOW	£3297		
3500 - (100)	CS100IBC	STERLING CS100 IBC Separator Complete	£4781		
7000 - (200)	CS200IBC	STERLING CS200 IBC Separator Complete	£6954		

STERLING Service kits



Product Code	Description	List Price	5 off	10 off
CS75SK	Service Kit for CS75 OWS, BLUE only (fits all models)	£56	£52 Each	£49.84 Each
CSR150SK	Service kit for CSR150 STERLING oil/water separator	£163		
CSR150SKAF	Active filter Service Kit for CSR150(AF)	£243		
CSR450SK	Service kit for CSR450 STERLING oil/water separator	£254		
CSR450SKAF	Service kit for CSR450 STERLING oil/water separator	£351		
CSR1000SK	Service kit for STERLING CSR1000 oil/water separator	£405		
CSR1000SKAF	Service kit for CSR1000 (AF) active filter	£566		
CSR2000SK	Service kit for CSR2000 comprises 2*CSR1000SK	£809		
CSR2000SKAF	Service kit for CSR2000 comprises 2*CSR1000-AFK	£1131		
CSR3000SK	Service kit for CSR3000 comprises 3*CSR1000SK	£1212		
CSR3000SKAF	Service kit for CSR3000AF comprises 3*CSR1000SKAF	£1697		
CS100IBCK	Service kit for CS100IBC (Also to fit SEPURA SEP3500)	£3572		
CS200IBCK	Service kit for CS200IBC (Also fits SEPURA SEP7000)	£5325		

Accessories for STERLING separators

Product Code	Description	List Price
CSR150STD	Stand base for CSR150	£126
CSR450STD	Stand base for CSR450	£126
CSEQ3	Flow divider to share inlet flow into 2 or 3 equal feeds	£274
SB1	Replacement Sample Bottle	£34
TISKIT	Time-in-service indicator kit. (Mounting card and TIS indicator)	£7
CS75FM	Floor mount cup for CS75 separator	£7

Condensate Drains

STERLING offers a carefully selected range of autodrains that will provide reliable condensate drainage across a wide spectrum of capacities, locations, operating conditions and performance parameters.

From simple mechanically operated float drains, through timer operated, hybrid and fully automatic level-sensing electronic drains with or without remote management functions, the correct choice can be found here.

Selection criteria

Drain Type	Purchase cost	Operating cost	Installation	Maintenance	System alarms	Comments
Timer controlled	Low	High	Simple / flexible	Low	None	Wastes a lot of compressed air
Float operated	Low / medium	Medium	Clean sites are best	Medium	Rarely	Can be troublesome on old or dirty plant
Hybrid	Medium	Low / medium	Simple / flexible	Low	None	Well balanced solution
Zero-loss electronic	Higher	Low	Follow the book - it's essential	Medium	Full spectrum	Long term cost saver. Install and service to the book.

At a glance



ZL1300 / ZL5000

Top of the range - automatic electronic zero-loss drain with a built-in strainer. Optional remote alarm.

16 bar - 37 or 140 m³/min



EMD12 to EMD150

Very well specified - automatic electronic zero-loss drain with a built-in strainer. Modular & easy to maintain. Remote alarm option

. 16 bar - 8.8 to 110 m³/min

16 bar - 37 or 140 m³/min



MZL1000

Perhaps the best available mechanical float drain. Integral bleed / test port and includes a pack of installation assets

16 bar - 28 m³/min



CS20B & CS402

Instantly recognisable mechanical float drains. Use CS402 on a dripleg; employ CS20B for bigger jobs where power isn't available

16 bar - 12 or 28 m³/min



AD950T

A timed drain that shortens its discharge time to allow for lower liquid flow. It saves money, but can be installed - like a timed drain.

16 or 80bar - up to 60 m³/min



TD15 & CS720xx

TD15 is easy. It comes with either a built-in ball valve and strainer or a separate one - and variable intervals. If you want more options, go to CS720 and choose.

16 or 80 bar - 12vdc to 220vac

Please note, capacities referred to relate to a 'wet' air receiver (before any dryer). Used downstream, a drain's capacity typically doubles when fitted to a dryer, and increases 10-fold if used on a filter.

ELECTRONIC ZERO-LOSS DRAINS

ZL1300 / ZL5000



ZL1300



Air operated diaphragm valve for high flow and reliability



ZL5000

STERLING ZL1300 & ZL5000 are electronic zero-loss condensate drains designed and built to the most exacting standards. Both versions provide long-term reliability, high capacity 1300 or 5000cfm (37 or 140 m³/min), and exceptionally low running costs.

Incorporating an internal strainer, local alarm, optional contacts for a remote alarm, override test button, and rated for IP65 protection - ZL1300 & ZL5000 offer the highest quality solution with rapid payback in compressed air savings.

Part code	Description	Capacity	Max pressure	Top inlet	Price
ZL1300-220	Zero loss Heavy Duty Autodrain 1/2" BSP 220vac	1300 cfm (37 m ³ /min)	16 bar	n/a	£461.00
ZL1300-110	Zero loss heavy duty Autodrain 1/2" BSP, 110vac	1300 cfm (37 m ³ /min)		n/a	£461.00
ZL1300-220-RA	Zero loss HD Autodrain 1/2" BSP 220vac, with alarm contact	1300 cfm (37 m ³ /min)		n/a	£497.00
ZL1300-110-RA	Zero loss HD Autodrain 1/2" BSP 110vac, with alarm contact	1300 cfm (37 m ³ /min)		n/a	£497.00
ZL5000-220	Zero loss heavy duty autodrain. 3/4" BSP. 220v	5000 cfm (140 m ³ /min)		3/4" BSP	£606.00
ZL5000-110	Zero loss HD autodrain. 3/4" BSP. 110v	5000 cfm (140 m ³ /min)		3/4" BSP	£606.00
ZL5000-220-RA	Zero loss HD drain. 3/4" BSP. 220vac. With alarm contact.	5000 cfm (140 m ³ /min)		3/4" BSP	£667.00

Spares and components

Part code	Description	Price
ZL1300-Controlbox	Housing ONLY for control PCB. With 'O' Ring seal	£66.00
ZLPCB-220	220vac PCB for ZL1300 and ZL5000 (inc sensor)	£161.00
ZLPCB-110	110vac PCB for ZL1300 and ZL5000 (inc sensor)	£161.00
ZLSV	Complete solenoid and valve sub-assembly for ZL1300	£131.00
ZL5000-Controlbox	Housing ONLY for control PCB. With 'O' ring seal.	£71.00
ZLPCB-220	220vac PCB for ZL1300 and ZL5000 (inc sensor)	£161.00
ZLPCB-110	110vac PCB for ZL1300 and ZL5000 (inc sensor)	£161.00
ZLSV-5000	Complete solenoid and valve sub-assembly for ZL5000	£154.00

Electronic Zero-loss drains

EMD 12, 25, 75 & 150

The STERLING EMD is an electronic zero-loss condensate drain designed and built to the most exacting standards to provide long-term reliability and exceptionally low running costs. EMD is a modular drain with an easily accessible strainer that can be removed for cleaning while the drain remains installed. The low cost service module is also quickly and easily replaced.

The EMD***A version offers powered connection for a remote-sited alarm

These drains can be installed either "horizontally" (in normal use such as under an air receiver), or "vertically" to simplify use with filters etc (see manual). It is recommended that in locations where significant debris is carried by the condensate, the preferred orientation is the more conventional 'vertical' option.



Part Code	Description	Capacity (Receiver)	Capacity (Dryer)	Capacity (Filter)	Max Pressure	Inlet/outlet	Price
EMD12230V	230V Condensate drain	310 cfm (8.8 m3/m)	620 cfm (18.5 m3/m)	3100 cfm (93 m3/m)	16 bar	G 1/2" 8mm pushfit	£162.00
EMD12110V	110V Condensate drain						£162.00
EMD12A230V	230V Condensate drain with alarm contacts	310 cfm (8.8 m3/m)	620 cfm (18.5 m3/m)	3100 cfm (93 m3/m)			£174.00
EMD12A110V	110V Condensate drain with alarm contacts						£174.00
EMD25230V	230V Condensate drain	650 cfm (18.2 m3/m)	1300 cfm (36.4 m3/m)	6500 cfm (193 m3/m)			£217.00
EMD25A_230V	230V Condensate drain with alarm contacts						£234.00
EMD75230V	230V Condensate drain	1940 cfm (55 m3/m)	3800 cfm (110 m3/m)	19400 cfm (580 m3/m)			£308.00
EMD75A_230V	230V Condensate drain with alarm contacts						£338.00
EMD150_230V	230V Condensate drain	3880 cfm (110 m3/m)	7760 cfm (220 m3/m)	38800 cfm (1160 m3/m)			£422.00
EMD150A_230V	230V Condensate drain with alarm contacts						£449.00

Spares and Accessories

Part Code	Description	Price
EMD12SK	Service kit for EMD12 230v	£84.40
EMD12SK110	Service kit for EMD12 110v	£84.40
EMD25_75_150SK_230V	Service kit for EMD25, 75 & 150 230V	£95
EMD25_75_150SK_110V	Service kit for EMD25, 75 & 150 110V	£95

Hybrid Autodrain (Timer + liquid sensor)

This drain has a fixed interval, but the built-in condensate sensor automatically adjusts the 'open' time according to the amount of moisture that's accumulated.

This minimises the volume of air that's lost during operation, but simplifies the installation because the drain can never get air-locked. For convenience, it can also be installed in various orientations.

Suitable for up to 2000cfm (60m³/min)



Part code	Description	Pressure	Interval time	Open time	Price	5+ (ea)
AD950T230	AD 950 T Intelligent timed drain 230vac 3/8"BSP & 3/8" hose	0-16 bar	Fixed	Automatic	£180	£168
AD950T110	AD 950 T Intelligent timed drain 110vac 3/8"BSP & 3/8" hose	0-16 bar			£90	
AD950T24	AD 950 T Intelligent timed drain 24vdc 3/8"BSP & 3/8" hose	0-16 bar			£90	

Special price offered on the AD950T110 & 24 VAC while stocks last!

Float Controlled Drains

Float drain for use on a drip leg etc. Features a poly-carbonate bowl protected by an aluminium housing.



Mechanical float drain for general use including receivers and distributed sites where there is no power.

Part code	Description	Pressure	Capacity	Price
CS402	CS 402 - 1/2" Mechanical float drain	0-16 bar	< 400 cfm < 12 m ³ /min	£44.00
CS20B	CS 20B - 1/2" Medium duty float drain		<1000 cfm <28 m ³ /min	£87.00

Extra Heavy Duty Mechanical Float Drain

MZL1000 is STERLING's extra heavy-duty mechanical float drain for systems up to 1000 cfm / 28m³/min. It has two 20mm inlets, and a 8mm outlet for which a (8mm push-to-fit hose adaptor is supplied. The MZL1000 also comes with an in-line strainer, isolating valve, connecting union and extension pipe.

A complete solution in a box with everything at the installer's fingertips.



Part code	Description	Pressure	Capacity	Price	5+ (ea)
MZL1000	MZL 1000 Automatic Drain Valve	0-16 bar	1000 cfm / 28m ³ /min	£130	£115

TD15 RANGE



Part code	Description	Pressure	Interval time	Open time	Price	5 off	10 off
TD15A_220V_1/2BSP	Timed drain integrated BVS - 1/2BSP - 220vac (CS720 equiv)	0-16 bar	0.5 - 45 minutes	0.5 - 10 seconds	£48	£44	£42
TD15A_110V_1/2BSP	Timed drain integrated BVS - 1/2 BSP - 110vac (CS720 equiv)				£48	£44	£42
TD15B_110V_1/2BSP	Timed drain + BVS - 1/2 BSP - 110vac (CS720 equivalent)				£48	£44	£42
TD15B_220V_1/2BSP	Timed drain + BVS - 1/2 BSP - 220vac (CS720 equivalent)				£48	£44	£42
TD15B_220V_1/2BSP_80BAR	Timed drain No BVS - 1/2 BSP - 220vac - 80 bar				£100	£95	£90
TD15B_220V_3/8BSP	Timed drain + BVS - 3/8 BSP 220vac - (CS720 equivalent)				£48	£44	£42
TD15B_24VAC_1/2BSP	Timed drain + BVS - 1/2 BSP 24vac (CS720 equivalent)				£70	£67	£64

CS711 / CS720 RANGE



Part code	Description	Pressure	Interval time	Open time	Price	5 off	10 off
CS711	CS 711 - 1/4" 230vAC Timed drain with BVS	0-16 bar	0 - 120 minutes	Fixed	£50	£47	£44
CS7203/8	CS 720 - 3/8" Timed drain with BVS - 220VAC	0-16 bar	0.5 - 45 minutes	0.5 - 10 seconds	£58	£54	£51
CS7203/8110VBVS	CS720 - 3/8 - Timed Drain with BVS - 110vac				£69	£65	£61
CS7203/824V	CS 720 - 3/8" Timed drain with BVS - 24vdc				£99	£93	£85
CS7201/2	CS 720 - 1/2" Timed drain with BVS 230V				£60	£56	£52
CS7201/2110vac	CS720 - 1/2" Timed drain with BVS - 110vac				£70	£66	£62
CS7201/224V	CS 720 - 1/2" Timed drain with BVS 24vdc				£102	£96	£89
CS7203/8	CS 720 - 3/8" Timed drain with BVS - 220VAC				£58	£54	£51
CS7203/8110VBVS	CS720 - 3/8 - Timed Drain with BVS - 110vac	£69	£65	£61			
CS7203/824V	CS 720 - 3/8" Timed drain with BVS - 24vdc	£99	£93	£85			
CS7203/880	CS 720 - 3/8" Timed drain 80 bar NO BVS	0-80 bar	0.5 - 45 minutes	0.5 - 10 seconds	£80	£75	£70
CS7201/280	CS 720 - 1/2" Timed drain 80 bar NO BVS	£85	£80	£75			
CS22006	CS 220-06 - 3/4" Timed drain. NO BVS 220v	0-16 bar	0.5 - 45 minutes	0.5 - 10 seconds	£126	£118	£110
CS22008	CS 220-08 - 1" Timed drain. NO BVS 220v				£139	£131	£120

3rd party OWS service kits

STERLING developed lightweight, clean and long lasting filter medium for our own condensate separators - and we generously build it into service kits to fit a host of separators by other manufacturers.

There's no risk of irritation from glass fibre, and we don't use carbon so there's no need to pre-soak our kits. We've listed the most obvious brands, but if you don't see what you want, **call us. We can probably help**



Brand	Page #	Brand	Page #
Atlas Copco	14	Ingersoll Rand	17
BEKO	14	Jorc	17
Boge	15	Kaeser / HPC	18
Bowman Stor	15	Mark	18
Compair	15	Omega	18
Denco	16	Parker Domnick hunter	19
Domnick Hunter	16	Parker Zander	19
Donaldson	16	Sepura	19
Gardner Denver	16	Ultrafilter /s Ultrasep	20
Hankison	16	Worthington /ABAC (Multibrand)	21
Hiross	17	Wortman	21
Hi-Line	17	Zander	22

Brand names and companies listed here are for identification purposes only.

Their use does not indicate or imply that STERLING Separation Ltd supplies service kits that are manufactured by or sold by those brands or companies, nor does it imply that we manufacture kits on behalf of those brands.

Atlas Copco

Brand Part Number	Description	Order Code	List Price
	OSC-35-A Compatible white bag	CS35A	£96
	OSC-35-B Compatible two white one black bag	CS35B	£239
	OSC-35-D Compatible one white one black bag	CS35D	£155
	OSC-95-A Compatible white bag	CS95A	£118
	OSC-95-B Compatible two white one black bag	CS95B	£292
	OSC-95-D Compatible one white one black bag	CS95D	£190
	OSC-145-A Compatible white bag	CS145A	£240
	OSC-145-B Compatible two white one black bag	CS145B	£455
	OSC-145-D Compatible one white one black bag	CS145D	£283
	OSC-355-A Compatible two white bags	CS355A	£281
	OSC-355-B Compatible four white two black bags	CS355B	£672
	OSC-355-D Compatible two white two black bags	CS355D	£432
	OSC-600-A Compatible two white bags	CS600A	£359
	OSC-600-B Compatible four white one black bags	CS600B	£975
	OSC-600-D Compatible two white two black bags	CS600D	£685
	OSC-825-A Compatible two white bags	CS825A	£422
	OSC-825-B Compatible four white two black bags	CS825B	£1126
	OSC-825-D Compatible two white two black bags	CS825D	£785
	OSC-1200-A Compatible two white bags	CS1200A	£444
	OSC-1200-B Compatible four white two black bags	CS1200B	£1138
	OSC-1200-D Compatible 2 white 2 black bags	CS1200D	£1024
	OSC-2400-A Compatible four white bags	CS2400A	£812
	OSC-2400-B Compatible eight white four black bags	CS2400B	£2198
	OSC-2400-D Compatible four white four black bags	CS2400D	£1485
OSW 5 & 11 SERVICE KIT	BEKO OWAMAT 1 or 2 STERLING service kit	CS01ST	£64
OSW 30 SERVICE KIT	BEKO OWAMAT 4 STERLING service kit	CS04ST	£106
OSW 55 SERVICE KIT	BEKO OWAMAT 5R STERLING service kit	CS05RST	£130
OSW 110 SERVICE KIT	BEKO OWAMAT 6 STERLING service kit	CS06ST	£230
OSW 315 SERVICE KIT	BEKO OWAMAT 8 STERLING service kit	CS08ST	£685

Beko

Brand Part Number	Description	Order Code	List Price
	BEKO OWAMAT 1 or 2 STERLING service kit	CS01ST	£64
	BEKO OWAMAT 3 STERLING service kit	CSKT03ST	£118
	BEKO OWAMAT 4 STERLING service kit	CS04ST	£106
	BEKO OWAMAT 5 (mk1 round type) Also fits U/F P30	CSKT05ST	£240
	BEKO OWAMAT 5R STERLING service kit	CS05RST	£130
	BEKO OWAMAT 6 STERLING service kit	CS06ST	£230
	BEKO OWAMAT 8 STERLING service kit	CS08ST	£685
	BEKO OWAMAT 10 STERLING service kit	CSO10ST	£93
	BEKO OWAMAT 11 STERLING service kit	CSO11ST	£110
	BEKO OWAMAT 12 STERLING Service Kit	CSO12ST	£152
	BEKO OWAMAT 14 STERLING Service Kit	CSO14ST	£204
	BEKO OWAMAT 15 STERLING Service Kit	CSO15ST	£330
	BEKO OWAMAT 20 STERLING service kit	CSKT020ST	£678

Boge

Brand Part Number	Description	Order Code	List Price
OKOMAT 5	Ultrafilter U 30SP - STERLING service kit	CSU30SPST	£146
OKOMAT 10	Ultrafilter U 10SP - STERLING service kit	CSU10SPST	£73
OKOMAT 15	Ultrafilter U 15SP - STERLING service kit	CSU15SPST	£87
OKOMAT 30	Service kit for Ultrasep UFS-SP 30N	CSU30SPN	£177
OKOMAT 60	Service kit for Ultrasep UFS-SP 60N	CSU60SPN	£244
OKOMAT 120	Ultrafilter U 120SP - STERLING service kit	CSU120SPST	£426
OKOMAT 240	Ultrafilter U 240SP - STERLING service kit	CSU240SPST	£856
CC 4	Jorc Mini STERLING full service kit (Equiv to CSEP035)	CSJMKST	£143
CC 8	Jorc Puro STERLING full service kit	CSJPKST	£229
CC 20	Jorc Midi STERLING full service kit	CSJMDKST	£418
CC 35	Jorc Grand STERLING full service kit	CSJGKST	£476
CC 70	Jorc Grand Extender STERLING service kit	CSJGEST	£260
CC2-2	Replace with STERLING CS75	CS75	£110
CC4-2	Jorc Sepremium 3.5 replacement service kit	CSJS3.5ST	£122
CC5-2	Jorc Sepremium 5 replacement service kit (Equiv to CSEP050)	CSJS5ST	£190
CC10-2	Jorc Sepremium 10 replacement service kit (Equiv to CSEP100)	CSJS10ST	£263
CC20-2	Jorc Sepremium 20 replacement service kit (Equiv to CSEP200)	CSJS20ST	£424
CC30-2	Jorc Sepremium 30 replacement service kit(Equiv to CSEP300)	CSJS30ST	£498
CC60-2	Jorc Sepremium 60 replacement service kit	CSJS60ST	£667

Bowman Stor

Brand Part Number	Description	Order Code	List Price
	Bowman Stor Bi-sep 5 Compatible Kit	CSBS5ST	£334
	Bowman Stor Bi-sep 20 Compatible Kit	CSBS20ST	£329
	Bowman Stor Bi-sep 25 Compatible Kit	CSBS25ST	£416
CSBS50ST	Bowman Stor Tri-sep 50 Compatible kit	CS355D	£432
CSBS100ST	Bowman Stor Tri-sep 100 Compatible Kit	CS600D	£684
CSBS150ST	Bowman Stor Tri-sep 150 Compatible kit	CS825D	£785
CSBS200ST	Bowman Stor Tri-sep 200 Compatible kit	CS1200D	£1024
CSBS400ST	Bowman Stor Tri-sep 400 Compatible kit	CS2400D	£2048

Compair

Brand Part Number	Description	Order Code	List Price
CS 2100	DH 2015 -STERLING compatible service kit	CSDH2015ST	£88
CS 2150	DH 2015 -STERLING compatible service kit	CSDH2015ST	£88
CS 2200	DH 2015 -STERLING compatible service kit	CSDH2015ST	£88
CS 2300	DH 2015 -STERLING compatible service kit	CSDH2015ST	£88
CS 2400	DH 2030 - STERLING compatible service kit	CSDH2030ST	£130
CS 2500	DH 500 - STERLING compatible service kit	CSDHES500ST	£186
CS2600	DH 1000 STERLING compatible service kit	CSDHES1000ST	£356
CSEP 020	Replace with STERLING CS75	CS75	£110
CSEP 035	Jorc Mini STERLING full service kit (Equiv to CSEP035)	CSJMKST	£143
CSEP 050	Jorc Sepremium 5 replacement service kit (Equiv to CSEP050)	CSJS5ST	£190
CSEP 100	Jorc Sepremium 10 replacement service kit (Equiv to CSEP100)	CSJS10ST	£263
CSEP 200	Jorc Sepremium 20 replacement service kit (Equiv to CSEP200)	CSJS20ST	£424
CSEP 300	Jorc Sepremium 30 replacement service kit(Equiv to CSEP300)	CSJS30ST	£498
CSEP 600	Jorc Sepremium 60 replacement service kit	CSJS60ST	£667

Denco

Brand Part Number	Description	Order Code	List Price
	Denco CF1000-Type Can	CSCF1000	£146
	Denco CF200-Type Can	CSCF200	£110

Domnick Hunter

Brand Part Number	Description	Order Code	List Price
DH 2010	DH 2010 - STERLING compatible service kit	CSDH2010ST	£60
DH 2015	DH 2015 -STERLING compatible service kit	CSDH2015ST	£88
DH 2030	DH 2030 - STERLING compatible service kit	CSDH2030ST	£130
KME 2020	DH 2010 - STERLING compatible service kit	CSDH2010ST	£60
KME 2015	DH 2015 -STERLING compatible service kit	CSDH2015ST	£88
KME 2030	DH 2030 - STERLING compatible service kit	CSDH2030ST	£130

Donaldson

Brand Part Number	Description	Order Code	List Price
DSO 070	Ultrafilter U 5SP - STERLING service kit	CSU5SPST	£73
DSO 145	Ultrafilter U 10SP - STERLING service kit	CSU10SPST	£73
DSO 265	Ultrafilter U 15SP - STERLING service kit	CSU15SPST	£87
DSO 530	Ultrafilter U 30SP - STERLING service kit	CSU30SPST	£146
DSO 1060	Ultrafilter U 60SP - STERLING service kit	CSU60SPST	£212
DSO 2120	Ultrafilter U 120SP - STERLING service kit	CSU120SPST	£426
DSO 4240	Ultrafilter U 240SP - STERLING service kit	CSU240SPST	£856
UFS-SP 10 N	Service kit for Ultrasep UFS-SP 10N	CSU10SPN	£87
UFS-SP 15 N	Service kit for Ultrasep UFS-SP 15N	CSU15SPN	£104
UFS-SP 30 N	Service kit for Ultrasep UFS-SP 30N	CSU30SPN	£177
UFS-SP 60 N	Service kit for Ultrasep UFS-SP 60N	CSU60SPN	£244
UFS-SP 120 N	Service kit for Ultrasep UFS-SP 120N	CSU120SPN	£477
UFS-SP 240 N	Service kit for Ultrasep UFS-SP 240N	CSU240SPN	£956

Garden Denver

Brand Part Number	Description	Order Code	List Price
GDW 5	Ultrafilter U 5SP - STERLING service kit	CSU5SPST	£73
GDW 10	Ultrafilter U 10SP - STERLING service kit	CSU10SPST	£73
GDW 15	Ultrafilter U 15SP - STERLING service kit	CSU15SPST	£87
GDW 30	Ultrafilter U 30SP - STERLING service kit	CSU30SPST	£146
GDW 60	Ultrafilter U 60SP - STERLING service kit	CSU60SPST	£212

Hankison

Brand Part Number	Description	Order Code	List Price
HS 60	Hankison HSMK 1 - STERLING compatible service kit	CSHSMK1ST	£136
HS 70	Hankison HSMK 1 - STERLING compatible service kit	CSHSMK1ST	£136
HS 120	Hankison HSMK 1 - STERLING compatible service kit	CSHSMK1ST	£136
HS 140	Hankison HSMK 2 - STERLING compatible service kit	CSHSMK2ST	£157
HS 180	Hankison HSMK 2 - STERLING compatible service kit	CSHSMK2ST	£157
HS 240	Hankison HSMK 2 - STERLING compatible service kit	CSHSMK2ST	£157
HS 300	Hankison HSMK 2 - STERLING compatible service kit	CSHSMK2ST	£157
HS 480	Hankison HSMK 2 - STERLING compatible service kit	CSHSMK2ST	£157
HS 900	Hankison HSMK 3 - STERLING compatible service kit	CSHSMK3ST	£157
HS 1800	Hankison HSMK 4 - STERLING compatible service kit	CSHSMK4ST	£224
HS 3600	Hankison HSMK 5 - STERLING compatible service kit	CSHSMK5ST	£390

Hiross

Brand Part Number	Description	Order Code	List Price
OWS 001	DH 2015 -STERLING compatible service kit	CSDH2015ST	£88
OWS 060	DH 2015 -STERLING compatible service kit	CSDH2015ST	£88
OWS 075	DH 2015 -STERLING compatible service kit	CSDH2015ST	£88
OWS 125	DH 2015 -STERLING compatible service kit	CSDH2015ST	£88
OWS 165	DH 2030 - STERLING compatible service kit	CSDH2030ST	£130
OWS 355	DH 500 - STERLING compatible service kit	CSDHES500ST	£186
OWS 485	DH 1000 STERLING compatible service kit	CSDHES1000ST	£356

Hi-Line

Brand Part Number	Description	Order Code	List Price
Consep 100	Compatible service kit for Consep 100	CSCONSEP100	£142
Consep 300	Compatible service kit for Consep300	CSCONSEP300	£221
Consep 750	Compatible service kit for Consep750	CSCONSEP750	£392
Consep 1500	Compatible service kit for Consep 1500	CSCONSEP1500	£775

Ingersoll Rand

Brand Part Number	Description	Order Code	List Price
Envirosep	DH 2010 - STERLING compatible service kit	CSDH2010ST	£60
ECS 6	DH 2015 -STERLING compatible service kit	CSDH2015ST	£88
ECS 12	DH 2015 -STERLING compatible service kit	CSDH2015ST	£88
ECS 18	DH 2015 -STERLING compatible service kit	CSDH2015ST	£88
ECS 24	DH 2015 -STERLING compatible service kit	CSDH2015ST	£88
ECS 30	DH 2030 - STERLING compatible service kit	CSDH2030ST	£130
ECS 36	DH 500 - STERLING compatible service kit	CSDHES500ST	£186
ECS 42	DH 1000 STERLING compatible service kit	CSDHES1000ST	£356

Jorc

Brand Part Number	Description	Order Code	List Price
Enviro	Jorc Enviro STERLING compatible service kit	CSENVST	£66
Mini (white only)	Jorc Mini compatible white bag	CSJMW	£68
Mini (Carbon only)	Jorc Mini STERLING alternative to carbon bag	CSJMCST	£78
Mini (full kit)	Jorc Mini STERLING full service kit (Equip to CSEP035)	CSJMKST	£143
Puro (white only)	Jorc Puro compatible white bag	CSJPW	£145
Puro (Carbon only)	Jorc Puro STERLING alternative to carbon bag	CSJPCST	£88
Puro (full kit)	Jorc Puro STERLING full service kit	CSJPKST	£229
Midi (white only)	Jorc Midi compatible White bag	CSJMDW	£183
Midi (Carbon only)	Jorc Midi STERLING alternative to carbon bag	CSJMDCST	£242
Midi (full kit)	Jorc Midi STERLING full service kit	CSJMDKST	£418
Grand (white only)	Jorc Grand compatible White bag	CSJGW	£220
Grand (carbon only)	Jorc Grand STERLING alternative to carbon bag	CSJGCST	£260
Grand (full kit)	Jorc Grand STERLING full service kit	CSJGKST	£476
Grand Ext service kit	Jorc Grand Extender STERLING service kit	CSJGEST	£260
Sepremium 3.5	Jorc Sepremium 3.5 replacement service kit	CSJS3.5ST	£122
Sepremium 5	Jorc Sepremium 5 replacement service kit (Equip to CSEP050)	CSJS5ST	£190
Sepremium 10	Jorc Sepremium 10 replacement service kit (Equip to CSEP100)	CSJS10ST	£263
Sepremium 20	Jorc Sepremium 20 replacement service kit (Equip to CSEP200)	CSJS20ST	£424
Sepremium 30	Jorc Sepremium 30 replacement service kit(Equip to CSEP300)	CSJS30ST	£498
Sepremium 60	Jorc Sepremium 60 replacement service kit	CSJS60ST	£667
Puro CT 3	Replacement service kit to fit Jorc Puro CT 3 separator	CSJPCT3	£102
Puro CT 7	Replacement service kit to fit Jorc Puro CT 7 separator	CSJPCT7	£136
Puro CT 15	Replacement service kit to fit Jorc Puro CT 15 separator	CSJPCT15	£204

Kaeser / HPC			
Brand Part Number	Description	Order Code	List Price
Aquamat 1 & 2	BEKO OWAMAT 1 or 2 STERLING service kit	CS01ST	£64
Aquamat 3	BEKO OWAMAT 3 STERLING service kit	CSKT03ST	£118
Aquamat 4	BEKO OWAMAT 4 STERLING service kit	CS04ST	£106
Aquamat 5	BEKO OWAMAT 5 (mk1 round type) Also fits U/F P30	CSKT05ST	£240
Aquamat 5R	BEKO OWAMAT 5R STERLING service kit	CS05RST	£130
Aquamat 6	BEKO OWAMAT 6 STERLING service kit	CS06ST	£230
Aquamat 8	BEKO OWAMAT 8 STERLING service kit	CS08ST	£685
Aquamat 20	BEKO OWAMAT 20 STERLING service kit	CSKT020ST	£678
Aquamat CF 3	BEKO OWAMAT 10 STERLING service kit	CSO10ST	£93
Aquamat CF 6	BEKO OWAMAT 11 STERLING service kit	CSO11ST	£110
Aquamat CF 9	BEKO OWAMAT 12 STERLING Service Kit	CSO12ST	£152
Aquamat CF 19	BEKO OWAMAT 14 STERLING Service Kit	CSO14ST	£204
Aquamat CF 38	BEKO OWAMAT 15 STERLING Service Kit	CSO15ST	£330
Aquamat CF168	BEKO OWAMAT 8 STERLING service kit	CS08ST	£685
Mark			
Brand Part Number	Description	Order Code	List Price
FOD 21-A	OSC-35-A Compatible white bag	CS35A	£96
FOD 21-B	OSC-35-B Compatible two white one black bag	CS35B	£239
FOD 21-D	OSC-35-D Compatible one white one black bag	CS35D	£155
FOD 57-A	OSC-95-A Compatible white bag	CS95A	£118
FOD 57-B	OSC-95-B Compatible two white one black bag	CS95B	£292
FOD 57 D	OSC-95-D Compatible one white one black bag	CS95D	£190
FOD 87-A	OSC-145-A Compatible white bag	CS145A	£239
FOD 87-B	OSC-145-B Compatible two white one black bag	CS145B	£455
FOD 87-D	OSC-145-D Compatible one white one black bag	CS145D	£283
FOD 213-A	OSC-355-A Compatible two white bags	CS355A	£281
FOD 213-B	OSC-355-B Compatible four white two black bags	CS355B	£672
FOD 213-D	OSC-355-D Compatible two white two black bags	CS355D	£432
FOD 360-A	OSC-600-A Compatible two white bags	CS600A	£359
FOD 360-B	OSC-600-B Compatible four white one black bags	CS600B	£975
FOD 360-D	OSC-600-D Compatible two white two black bags	CS600D	£684
FOD 495-A	OSC-825-A Compatible two white bags	CS825A	£422
FOD 495-B	OSC-825-B Compatible four white two black bags	CS825B	£1126
FOD 495-D	OSC-825-D Compatible two white two black bags	CS825D	£785
FOD 708-A	OSC-1200-A Compatible two white bags	CS1200A	£443
FOD708-B	OSC-1200-B Compatible four white two black bags	CS1200B	£1138
FOD 708-D	OSC-1200-D Compatible 2 white 2 black bags	CS1200D	£1024
FOD 1418-A	OSC-2400-A Compatible four white bags	CS2400A	£812
FOD 1481-A	OSC-2400-B Compatible eight white four black bags	CS2400B	£2197
FOD 1481-D	OSC-2400-D Compatible four white four black bags	CS2400D	£2048
Omega			
Brand Part Number	Description	Order Code	List Price
WOS 4	Service kit to fit OMEGA WOS 4	CSWOS4	£95.00
WOS 8	Service kit to fit OMEGA WOS 8	CSWOS8	£167.00
WOS 20	Service kit to fit OMEGA WOS 20	CSWOS20	£218.00
WOS 35	Service kit to fit OMEGA WOS 35	CSWOS35	£335.00

Parker D/H

Brand Part Number	Description	Order Code	List Price
ES 2100	DH 2015 -STERLING compatible service kit	CSDH2015ST	£88
ES 2150	DH 2015 -STERLING compatible service kit	CSDH2015ST	£88
ES 2200	DH 2015 -STERLING compatible service kit	CSDH2015ST	£88
ES 2300	DH 2015 -STERLING compatible service kit	CSDH2015ST	£88
ES 2400	DH 2030 - STERLING compatible service kit	CSDH2030ST	£130
ES 2500	DH 500 - STERLING compatible service kit	CSDHES500ST	£186
ES 2600	DH 1000 STERLING compatible service kit	CSDHES1000ST	£356
ESMK 1	DH 2010 - STERLING compatible service kit	CSDH2010ST	£60
ESMK 2	DH 2015 -STERLING compatible service kit	CSDH2015ST	£88
ESMK 3	DH 500 - STERLING compatible service kit	CSDHES500ST	£186

Parker Zander

Brand Part Number	Description	Order Code	List Price
ES 36	DH 2015 -STERLING compatible service kit	CSDH2015ST	£88
ES 90	DH 2015 -STERLING compatible service kit	CSDH2015ST	£88
ES125	DH 2015 -STERLING compatible service kit	CSDH2015ST	£88
ES 250	DH 2030 - STERLING compatible service kit	CSDH2030ST	£130
ES 500	DH 500 - STERLING compatible service kit	CSDHES500ST	£186
ES1000	DH 1000 STERLING compatible service kit	CSDHES1000ST	£356

Sepura

Brand Part Number	Description	Order Code	List Price
Sep 60	STERLING CS75 (Fits sep 60 wall bracket & has service kit)	CS75	£110
Sep 100	Compatible Service kit to fit SEP100/120	120KIT-ALTERNATIVE	£144
Sep 300	Compatible Service kit to fit SEP300/360	360KIT-ALTERNATIVE	£228
Sep 750	Compatible Service kit to fit SEP750/900	900KIT-ALTERNATIVE	£360
Sep 1500	Compatible Service kit to fit SEP1500/1800	1800KIT-ALTERNATIVE	£719
Sep 120	Compatible Service kit to fit SEP100/120	120KIT-ALTERNATIVE	£144
Sep 360	Compatible Service kit to fit SEP300/360	360KIT-ALTERNATIVE	£228
Sep 900	Compatible Service kit to fit SEP750/900	900KIT-ALTERNATIVE	£360
Sep 1250	Compatible Service kit to fit SEP 1250	1250KIT-ALTERNATIVE	£560
Sep 1800	Compatible Service kit to fit SEP1500/1800	1800KIT-ALTERNATIVE	£719
Sep 2500	Compatible Service kit to fit SEP 2500	2500KIT-ALTERNATIVE	£1120
Sep 3500	Service kit for CS100IBC (Also to fit SEPURA SEP3500)	CS100IBCK	£3572
Sep 7000	Service kit for CS200IBC (Also fits SEPURA SEP7000)	CS200IBCK	£5325

Ultrafilter / Ultrasep			
Brand Part Number	Description	Order Code	List Price
UFS 5 SP	Ultrafilter U 5SP - STERLING service kit	CSU5SPST	£73
UFS 7.5 SP	Ultrafilter U 7.5SP/10SP - STERLING service kit	CSU7.5SPST	£73
UFS 10 SP	Ultrafilter U 10SP - STERLING service kit	CSU10SPST	£73
UFS 15 SP	Ultrafilter U 15SP - STERLING service kit	CSU15SPST	£87
UFS 30 SP	Ultrafilter U 30SP - STERLING service kit	CSU30SPST	£146
UFS 60 SP	Ultrafilter U 60SP - STERLING service kit	CSU60SPST	£212
UFS 120 SP	Ultrafilter U 120SP - STERLING service kit	CSU120SPST	£426
UFS 240 SP	Ultrafilter U 240SP - STERLING service kit	CSU240SPST	£856
UFS-SP 10 N	Service kit for Ultrasep UFS-SP 10N	CSU10SPN	£87
UFS-SP 15 N	Service kit for Ultrasep UFS-SP 15N	CSU15SPN	£104
UFS-SP 30 N	Service kit for Ultrasep UFS-SP 30N	CSU30SPN	£177
UFS-SP 60 N	Service kit for Ultrasep UFS-SP 60N	CSU60SPN	£244
UFS-SP 120 N	Service kit for Ultrasep UFS-SP 120N	CSU120SPN	£477
UFS-SP 240 N	Service kit for Ultrasep UFS-SP 240N	CSU240SPN	£956
UFS 7.5 P	Ultrafilter U 7.5P - STERLING service kit	CSU7.5PST	£71
UFS 15 P	Ultrafilter U 15P - STERLING service kit	CSU15PST	£85
UFS 30 P	Ultrafilter U 30P - STERLING service kit	CSU30PST	£140
UFS 60 P	Ultrafilter U 60P - STERLING service kit	CSU60PST	£210
UFS 120 P	Ultrafilter U 120P - STERLING service kit	CSU120PST	£412
UFS 240 P	Ultrafilter U 240 P - STERLING service kit	CSU240PST	£824
A-SP 5	Ultrafilter U 5SP - STERLING service kit	CSU5SPST	£73
A-SP 7.5	Ultrafilter U 7.5SP/10SP - STERLING service kit	CSU7.5SPST	£73
A-SP 10	Ultrafilter U 10SP - STERLING service kit	CSU10SPST	£73
A-SP 15	Ultrafilter U 15SP - STERLING service kit	CSU15SPST	£87
A-SP 30	Ultrafilter U 30SP - STERLING service kit	CSU30SPST	£146
A-SP 60	Ultrafilter U 60SP - STERLING service kit	CSU60SPST	£212
A-SP 120	Ultrafilter U 120SP - STERLING service kit	CSU120SPST	£426
A-SP 240	Ultrafilter U 240SP - STERLING service kit	CSU240SPST	£856
A-P 7.5	Ultrafilter U 7.5P - STERLING service kit	CSU7.5PST	£71
A-P 15	Ultrafilter U 15P - STERLING service kit	CSU15PST	£85
A-P 30	Ultrafilter U 30P - STERLING service kit	CSU30PST	£140
A-P 60	Ultrafilter U 60P - STERLING service kit	CSU60PST	£210
A-P 120	Ultrafilter U 120P - STERLING service kit	CSU120PST	£412
A-P 240	Ultrafilter U 240 P - STERLING service kit	CSU240PST	£824

Worthington and ABAC

Brand Part Number	Description	Order Code	List Price
(W) S 13-A	OSC-35-A Compatible white bag	CS35A	£96
(W) S 13-B	OSC-35-B Compatible two white one black bag	CS35B	£239
(W) S 13-D	OSC-35-D Compatible one white one black bag	CS35D	£155
(W) S 34-A	OSC-95-A Compatible white bag	CS95A	£118
(W) S 34-B	OSC-95-B Compatible two white one black bag	CS95B	£292
(W) S 34-D	OSC-95-D Compatible one white one black bag	CS95D	£190
(W) S 52-A	OSC-145-A Compatible white bag	CS145A	£239
(W) S 52-B	OSC-145-B Compatible two white one black bag	CS145B	£455
(W) S 52-D	OSC-145-D Compatible one white one black bag	CS145D	£283
(W) S 128-A	OSC-355-A Compatible two white bags	CS355A	£281
(W) S 128-B	OSC-355-B Compatible four white two black bags	CS355B	£672
(W) S 128-D	OSC-355-D Compatible two white two black bags	CS355D	£432
(W) S 218-A	OSC-600-A Compatible two white bags	CS600A	£359
(W) S 218-B	OSC-600-B Compatible four white one black bags	CS600B	£975
(W) S 218-D	OSC-600-D Compatible two white two black bags	CS600D	£684
(W) S 297-A	OSC-825-A Compatible two white bags	CS825A	£422
(W) S 297-B	OSC-825-B Compatible four white two black bags	CS825B	£1126
(W) S 297-D	OSC-825-D Compatible two white two black bags	CS825D	£785
(W) S 425-A	OSC-1200-A Compatible two white bags	CS1200A	£443
(W) S 425-B	OSC-1200-B Compatible four white two black bags	CS1200B	£1138
(W) S 425-D	OSC-1200-D Compatible 2 white 2 black bags	CS1200D	£1024
(W) S 850-A	OSC-2400-A Compatible four white bags	CS2400A	£812
(W) S 850-B	OSC-2400-B Compatible eight white four black bags	CS2400B	£2197
(W) S 850-D	OSC-2400-D Compatible four white four black bags	CS2400D	£2048

Wortman

Brand Part Number	Description	Order Code	List Price
Drukomat 1	Zander/Wortman S1 - STERLING service kit	CSWS1ST	£84
Drukomat 2	Zander/Wortman S2 - STERLING service kit	CSWS2ST	£94
Drukomat 4	Zander/Wortman S4 - STERLING service kit	CSWS4ST	£94
Drukomat 8	Zander/Wortman S8 - STERLING service kit	CSWS8ST	£94
Drukomat 15	Zander/Wortman S15 - STERLING service kit	CSWS15ST	£94
Drukomat 30	Zander/Wortman S30 - STERLING service kit	CSWS30ST	£170
Drukomat 60	Zander/Wortman S60 - STERLING service kit	CSWS60ST	£339
Air filter	Zander Ecosep Airbag	Airbag	£52
Drukosep 1	Service kit for Drukosep 1	CSDKS1	£78
Drukosep 2	Service kit for Drukosep 2	CSDKS2	£87
Drukosep 3	Service kit for Drukosep 3	CSDKS3	£94
Drukosep 6	Service kit for Drukosep 6	CSDKS6	£129
Drukosep 8	Service kit for Drukosep 8	CSDKS8	£153
Drukosep 10	Service kit for Drukosep 10	CSDKS10	£162
Drukosep 12	Service kit for Drukosep 12	CSDKS12	£178
Drukosep 25	Service kit for Drukosep 25	CSDKS25	£297
Drukosep 40	Service kit for Drukosep 40	CSDKS40	£450
Air Filter	Air filter for Drukosep 3-40	CSDKSAF	£55

Zander			
Brand Part Number	Description	Order Code	List Price
SL 1	DH 2015 -STERLING compatible service kit	CSDH2015ST	£88
SL 2	DH 2015 -STERLING compatible service kit	CSDH2015ST	£88
SL 5	DH 2015 -STERLING compatible service kit	CSDH2015ST	£88
SL 8	DH 2015 -STERLING compatible service kit	CSDH2015ST	£88
SL 15	DH 2030 - STERLING compatible service kit	CSDH2030ST	£130
SL 30	DH 500 - STERLING compatible service kit	CSDHES500ST	£186
SL 60	DH 1000 STERLING compatible service kit	CSDHES1000ST	£356
SL 100	DH 2015 -STERLING compatible service kit	CSDH2015ST	£88
SL 150	DH 2015 -STERLING compatible service kit	CSDH2015ST	£88
SL 200	DH 2015 -STERLING compatible service kit	CSDH2015ST	£88
SL 300	DH 2015 -STERLING compatible service kit	CSDH2015ST	£88
SL 400	DH 2030 - STERLING compatible service kit	CSDH2030ST	£130
SL 500	DH 500 - STERLING compatible service kit	CSDHES500ST	£186
SL 600	DH 1000 STERLING compatible service kit	CSDHES1000ST	£356
Ecosep S1	Zander/Wortman S1 - STERLING service kit	CSWS1ST	£84
Ecosep S2	Zander/Wortman S2 - STERLING service kit	CSWS2ST	£94
Ecosep S4	Zander/Wortman S4 - STERLING service kit	CSWS4ST	£94
Ecosep S8	Zander/Wortman S8 - STERLING service kit	CSWS8ST	£94
Ecosep S15	Zander/Wortman S15 - STERLING service kit	CSWS15ST	£94
Ecosep S30	Zander/Wortman S30 - STERLING service kit	CSWS30ST	£170
Ecosep S60	Zander/Wortman S60 - STERLING service kit	CSWS60ST	£339
Air filter	Zander Ecosep Airbag	AIRBAG	£52
WT1 / WT10	Zander WT1/10 - STERLING service kit	CSWT1/10ST	£90
WT 2	Zander WT2 - STERLING service kit	CSWT2ST	£135
WT 3	Zander WT3 - STERLING service kit	CSWT3ST	£318
WT 20	Zander WT20 - STERLING service kit	CSWT20ST	£180
WT 30	Zander WT30 - STERLING service kit	CSWT30ST	£353
Airbag	AIRBAG for Zander WT	CSWTAIRBAG	£52

STERLING Filter housings and elements

New Premium filters and STERLING Originals

Premium range

- Easy 'click-to-lock' assembly
- Colour coded elements
- Double 'O' ring element seals.
- Complete with a differential pressure gauge
- Plastic coated exterior finish
- Push fittings on included drain
- There's a price benefit too



Original range

STERLING's original range has been a huge seller for years, and we understand it isn't easy to change.

That's why we'll continue to support you and this product line with in-stock supplies of housings and elements.

It's still great value



STERLING filtration products are designed and manufactured to the highest standards.

See specimen data sheet on our website or contact us for further details.

For next-working-day delivery on most items.....

Call - 01543 502010

Email - sales@sterlingsep.com

Premium Filters

A brand new range of compressed air filter housings and elements

effective, efficient, economical

it's **Premium**
compressed air filtration



This is why they are premium!

- Differential pressure gauge & drain fitted as standard
- High quality smooth coated internals
- Powder coated external finish
- 'Push fit' quick fittings on drain connections
- Manual override provided to exercise the drain
- Precision bowl threads with positive 'click' close
- Generously proportioned for high flow and low pressure drop
- Easily identified grades - elements have colour coded caps
- Double 'O' ring element seals
- Beautifully engineered and finished to the highest standard



Premium Compressed Air Filtration

At STERLING, we've been known for our great value, excellent customer service and wide range of available stock for a number of years. Added to that, STERLING encompasses a wealth of industry knowledge collected during more than a century of real world experience in compressed air.

Nowhere is that experience more valuable than in the field of air filtration where the overlapping brands and versions are a minefield for the service provider.

We share our experience on legacy systems freely with our partners, and will continue to do so - but this new range takes a refreshingly different position.

Our PREMIUM filters bring you quality build and performance, allied to a range of housings complete with DPG and drain, and the filtration grades you need - from stock with STERLING's usual keen value

Part code	Capacity cfm m3/min	Thread	Element	Grade	Dim 'A'	Dim 'B'	Dim 'C'	Dim 'D'	Housing price (inc DPG, Element & drain)	Replacement Element price
PCSH45R	45 - 2.1	1/2"	PCS45R	1 micron	240	95	32	51	£176	£33.80
PCSH45S			0.01 micron							
PCSH45A			Carbon							
PCSH85R-1/2	85 - 2.4	1/2"	PCS85R	1 micron	280	95	32	51	£198	£42
PCSH85S-1/2			0.01 micron							
PCSH85A-1/2			Carbon							
PCSH85R-3/4	85 - 2.4	3/4"	PCS85R	1 micron	280	95	32	51	£198	£42
PCSH85S-3/4			0.01 micron							
PCSH85A-3/4			Carbon							
PCSH125R	125 - 3.5	1"	PCS125R	1 micron	300	125	38	65	£258	£55
PCSH125S			0.01 micron							
PCSH125A			Carbon							
PCSH205R	205 - 5.8	1-1/2"	PCS205R	1 micron	420	125	38	65	£296	£76.80
PCSH205S			0.01 micron							
PCSH205A			Carbon							
PCSH320R	320-9.1	1-1/2"	PCS320R	1 micron	420	125	38	65	£364	£94
PCSH320S			0.01 micron							
PCSH320A			Carbon							
PCSH415R	415 - 11.8	2"	PCS415R	1 micron	550	170	46	82	£410	£120
PCSH415S			0.01 micron							
PCSH415A			Carbon							
PCSH550R	550-15.6	2"	PCS550R	1 micron	550	170	46	82	£690	£165
PCSH550S			0.01 micron							
PCSH550A			Carbon							
PCSH750R	750-21.2	2-1/2"	PCS750R	1 micron	640	205	60	100	£740	£198
PCSH750S			0.01 micron							
PCSH750A			Carbon							
PCSH900R	900-25.5	2-1/2"	PCS900R	1 micron	640	205	60	100	£800	£204
PCSH900S			0.01 micron							
PCSH900A			Carbon							
PCSH1100R	1100 31.2	3"	PCS1100R	1 micron	790	205	60	100	£1040	£220
PCSH1100S			0.01 micron							
PCSH1100A			Carbon							
PCSH1450R	1450-41.0	4"	PCS1450R	1 micron	840	450	85	110	£1300	£299
PCSH1450S			0.01 micron							
PCSH1450A			Carbon							

STERLING Original

Filter housing dimensions & elements data



Housing Number	Dimension A	Dimension B	Dimension C	Dimension D
CSH0035	187	88	20	60
CSH0050	187	88	20	60
CSH0075	257	88	20	80
CSH0120	263	125	32	100
CSH0200	363	125	32	120
CSH0300	461	125	32	140
CSH0460	640	125	32	160
CSH0600	684	163	43	520
CSH0900	935	163	43	770
CSH1000	935	163	43	770
CSH1290	795	240	59	630
CSH1640	1000	240	59	780

Flow rate correction factors for both filter ranges

Operating pressure (bar)	2	3	4	5	6	7	8	9	10	11	12	13	14	15	16
Operating pressure (psi)	29	44	58	72	87	100	115	130	145	160	174	189	203	218	232
Correction factor	0.38	0.52	0.63	0.79	0.88	1	1.13	1.26	1.38	1.52	1.65	1.76	1.87	2	2.14

Filter options & spares

Part no	Description	Price
CSMCD	Manual drain for filter housings (carbon element)	£15.90
EMD12230V	EMD12 230V Condensate drain	£162.00
EMD12A230V	EMD12A 230V Condensate drain with alarm contacts	£174.00
AOK16B	Float drain	£41.40
CSPDI16	Button indicator for filter housing	£26.50
See Page 43 for drains to fit other housings		

Housing number	Description	Flow rate cfm (m ³ /min)	Element (included)	Weight (Kg)	Price
CSH0035P	3/8" Filter hsg 3m element AOK16B drain	35 / 1	CS0056P	0.7	£156.00
CSH0035R	3/8" Filter hsg 1m element AOK16B drain		CS0056R		£156.00
CSH0035S	3/8" Filter hsg 0.01m element AOK16B drain		CS0056S		£156.00
CSH0035A	3/8" Filter hsg Carbon element Manual drain		CS0056A		£132.00
CSH0050P	1/2" Filter hsg 3m element AOK16B drain	50 / 1.3	CS0076P	0.7	£177.00
CSH0050R	1/2" Filter hsg 1m element AOK16B drain		CS0076R		£177.00
CSH0050S	1/2" Filter hsg 0.01m element AOK16B drain		CS0076S		£177.00
CSH0050A	1/2" Filter hsg Carbon element Manual drain		CS0076A		£153.00
CSH0075P	3/4" Filter hsg 3m element AOK16B drain	75 / 2	CS0106P	0.8	£196.00
CSH0075R	3/4" Filter hsg 1m element AOK16B drain		CS0106R		£196.00
CSH0075S	3/4" Filter hsg 0.01m element AOK16B drain		CS0106S		£196.00
CSH0075A	3/4" Filter hsg Carbon element Manual drain		CS0106A		£172.00
CSH0120P	1" Filter hsg 3m element AOK16B drain	120 / 3.3	CS0186P	1.8	£257.00
CSH0120R	1" Filter hsg 1m element AOK16B drain		CS0186R		£257.00
CSH0120S	1" Filter hsg 0.01m element AOK16B drain		CS0186S		£257.00
CSH0120A	1" Filter hsg Carbon element Manual drain		CS0186A		£233.00
CSH0200P	1" Filter hsg 3m element AOK16B drain	200 / 5.6	CS0306P	2.5	£290.00
CSH0200R	1" Filter hsg 1m element AOK16B drain		CS0306R		£290.00
CSH0200S	1" Filter hsg 0.01m element AOK16B drain		CS0306S		£290.00
CSH0200A	1" Filter hsg Carbon element Manual drain		CS0306A		£266.00
CSH0300P	1 1/2" Filter hsg 3m element AOK16B drain	300 / 8.5	CS0476P	2.5	£359.00
CSH0300R	1 1/2" Filter hsg 1m element AOK16B drain		CS0476R		£359.00
CSH0300S	1 1/2" Filter hsg 0.01m element AOK16B drain		CS0476S		£359.00
CSH0300A	1 1/2" Filter hsg Carbon element Manual drain		CS0476A		£334.00
CSH0460P	1 1/2" Filter hsg 3m element AOK16B drain	460 / 13	CS0706P	3.3	£451.00
CSH0460R	1 1/2" Filter hsg 1m element AOK16B drain		CS0706R		£451.00
CSH0460S	1 1/2" Filter hsg 0.01m element AOK16B drain		CS0706S		£451.00
CSH0460A	1 1/2" Filter hsg Carbon element Manual drain		CS0706A		£427.00
CSH0600P	2" Filter hsg 3m element AOK16B drain	600 / 16.7	CS0946P	5.1	£700.00
CSH0600R	2" Filter hsg 1m element AOK16B drain		CS0946R		£700.00
CSH0600S	2" Filter hsg 0.01m element AOK16B drain		CS0946S		£700.00
CSH0600A	2" Filter hsg Carbon element Manual drain		CS0946A		£675.00
CSH0900P	2" Filter hsg 3m element AOK16B drain	900 / 25	CS1506P	7.1	£837.00
CSH0900R	2" Filter hsg 1m element AOK16B drain		CS1506R		£837.00
CSH0900S	2" Filter hsg 0.01m element AOK16B drain		CS1506S		£837.00
CSH0900A	2" Filter hsg Carbon element Manual drain		CS1506A		£812.00
CSH1000P	2 1/2" Filter hsg 3m element AOK16B drain	1000 / 28	CS1506P	6.9	£1,145.00
CSH1000R	2 1/2" Filter hsg 1m element AOK16B drain		CS1506R		£1,145.00
CSH1000S	2 1/2" Filter hsg 0.01m element AOK16B drain		CS1506S		£1,145.00
CSH1000A	2 1/2" Filter hsg Carbon element Manual drain		CS1506A		£1,121.00
CSH1290P	3" Filter hsg 3m element AOK16B drain	1290 / 36	CS2006P	12.9	£1,181.00
CSH1290R	3" Filter hsg 1m element AOK16B drain		CS2006R		£1,181.00
CSH1290S	3" Filter hsg 0.01m element AOK16B drain		CS2006S		£1,181.00
CSH1290A	3" Filter hsg Carbon element Manual drain		CS2006A		£1,157.00
CSH1640P	3" Filter hsg 3m element AOK16B drain	1640 / 46	CS2406P	14	£1,792.00
CSH1640R	3" Filter hsg 1m element AOK16B drain		CS2406R		£1,792.00
CSH1640S	3" Filter hsg 0.01m element AOK16B drain		CS2406S		£1,792.00
CSH1640A	3" Filter hsg Carbon element Manual drain		CS2406A		£1,768.00

Element	Description	Housing Number	Price
CS0056P	3m element to fit STERLING CSH0035P	CSH0035	£29.00
CS0056R	1m element to fit STERLING CSH0035R		
CS0056S	0.01m element to fit STERLING CSH0035S		
CS0056A	Carbon element to fit STERLING CSH0035A		
CS0076P	3m element to fit STERLING CSH0050P	CSH0050	£35.90
CS0076R	1m element to fit STERLING CSH0050R		
CS0076S	0.01m element to fit STERLING CSH0050S		
CS0076A	Carbon element to fit STERLING CSH0050A		
CS0106P	3m element to fit STERLING CSH0075P	CSH0075	£46.20
CS0106R	1m element to fit STERLING CSH0075R		
CS0106S	0.01m element to fit STERLING CSH0075S		
CS0106A	Carbon element to fit STERLING CSH0075A		
CS0186P	3m element to fit STERLING CSH0120P	CSH0120	£58.10
CS0186R	1m element to fit STERLING CSH0120R		
CS0186S	0.01m element to fit STERLING CSH0120S		
CS0186A	Carbon element to fit STERLING CSH0120A		
CS0306P	3m element to fit STERLING CSH0200P	CSH0200	£81.90
CS0306R	1m element to fit STERLING CSH0200R		
CS0306S	0.01m element to fit STERLING CSH0200S		
CS0306A	Carbon element to fit STERLING CSH0200A		
CS0476P	3m element to fit STERLING CSH0300P	CSH0300	£100.00
CS0476R	1m element to fit STERLING CSH0300R		
CS0476S	0.01m element to fit STERLING CSH0300S		
CS0476A	Carbon element to fit STERLING CSH0300A		
CS0706P	3m element to fit STERLING CSH0460P	CSH0460	£127.00
CS0706R	1m element to fit STERLING CSH0460R		
CS0706S	0.01m element to fit STERLING CSH0460S		
CS0706A	Carbon element to fit STERLING CSH0460A		
CS0946P	3m element to fit STERLING CSH0600P	CSH0600	£181.00
CS0946R	1m element to fit STERLING CSH0600R		
CS0946S	0.01m element to fit STERLING CSH0600S		
CS0946A	Carbon element to fit STERLING CSH0600A		
CS1506P	3m element to fit STERLING CSH0900P	CSH0900	£221.00
CS1506R	1m element to fit STERLING CSH0900R		
CS1506S	0.01m element to fit STERLING CSH0900S		
CS1506A	Carbon element to fit STERLING CSH0900A		
CS1506P	3m element to fit STERLING CSH0900P	CSH1000	£221.00
CS1506R	1m element to fit STERLING CSH0900R		
CS1506S	0.01m element to fit STERLING CSH0900S		
CS1506A	Carbon element to fit STERLING CSH0900A		
CS2006P	3m element to fit STERLING CSH1290P	CSH1290	£242.00
CS2006R	1m element to fit STERLING CSH1290R		
CS2006S	0.01m element to fit STERLING CSH1290S		
CS2006A	Carbon element to fit STERLING CSH1290A		
CS2406P	3m element to fit STERLING CSH1640P	CSH1640	£325.00
CS2406R	1m element to fit STERLING CSH1640R		
CS2406S	0.01m element to fit STERLING CSH1640S		
CS2406A	Carbon element to fit STERLING CSH1640A		

Cyclone separators - aluminium housing, 16bar



Cyclone separators (c/w element and drain)

Part code	Description	Pipe Size	Flow rate m ³ min / cfm	Cyclone element (inc)	Price
CKL005B	3/8"Condensate separator	3/8"	1 / 35	CKL06050	£179.00
CKL007B	1/2"Condensate separator	1/2"	1.3 / 50	CKL07050	£191.00
CKL010B	3/4"Condensate separator	3/4"	2 / 75	CKL14050	£220.00
CKL018B	1"Condensate separator	1"	3.3 / 120	CKL12075	£284.00
CKL047B	1 1/2"Condensate separator	1 1/2"	5.6 / 200	CKL32075	£353.00
CKL094B	2"Condensate separator	2"	8.5 / 300	CKL51090	£689.00
CKL150B	2 1/2"Condensate separator	2 1/2"	13 / 460	CKL76090	£784.00
CKL200B	3"Condensate separator	3"	17/600	CKL51140	£1,554.00

Cyclone elements

Part code	Description	Pipe Size	Flow rate m ³ min / cfm	Cyclone element (inc)	Price
CKL06050	Cartridge for CKL005B 3/8"Cond Sep	3/8"	1 / 35	CKL005B	£37.10
CKL07050	Cartridge for CKL007B 1/2"Cond Sep	1/2"	1.3 / 50	CKL007B	£41.40
CKL14050	Cartridge for CKL010B 3/4"Cond Sep	3/4"	2 / 75	CKL010B	£47.70
CKL12075	Cartridge for CKL018B 1"Cond Sep	1"	3.3 / 120	CKL018B	£58.30
CKL32075	Cartridge for CKL047B 1 1/2"Cond Sep	1 1/2"	5.6 / 200	CKL047B	£68.90
CKL51090	Cartridge for CKL094B 2"Cond Sep	2"	8.5 / 300	CKL094B	£149.00
CKL76090	Cartridge for CKL150B 2 1/2"Cond Sep	2 1/2"	13 / 460	CKL150B	£149.00
CKL51140	Cartridge for CKL200B 3"Cond Sep	3"	17/600	CKL200B	£315.00

Autodrains for air filter housings

A range of float drains to fit various common OEM filter housings



Image #	Guide to housing compatibility	Thread size & float dia	STERLING part code	Price for each drain, per quantity			
				1-9	10-24	25-49	50+
1	STERLING Premium and Original ranges, Atlas Copco (pre 2014) Omega, MTA, CTA, Domnick / Parker Evolution, Zander GL, Sotras, Boge (pre 2021), OMI, Hiross, Fruilair, Ultrafilter 80 series, HPC (2012-2019). Comp-Air (2015-2022) Atlas Multi-brand (Abac, Worthington, Mark, Ceccato, Alup, CP, Puska) - pre 2014	1/2" BSP 36.8mm	FD1/2"8PF Generally compatible with IFD-AC-G20	£39	£36	£32.40	£30.24
2	Old Atlas Copco+ and Multi-brand (Abac, Worthington, Mark, Ceccato, Alup, CP, Puska, Pneumatech)	3/8" BSP 36.8mm	IFD-AC-G17.	£39	£36	£32.40	£30.24
3	DH Oilx, A/C, Compair, Broomwade, Sullair, Hydrovane, Norgren — all pre 2013. I/R pre 2002, HPC pre 2012	M15.5x1.5 38mm	IFD-DH-155	£16	£15	£13.50	£12.60
4	Zander(pre-GL), Boge(old), AFE, Hankison, Hi-Line, Alup/Almig, Kaeser (old), SPX, Flair, Knocks, Wilkerson	M14 x 1.25 30mm	IFD-Z-14	£39	£36	£32.40	£30.24
5	Ultrafilter/Donaldson 90 series, SMC AF4000, . . Mikropor (old series)	M14 x 1.25 38mm	IFD-UF-14	£16	£15	£13.50	£12.60
6	Walker (old), BEKO Clearpoint (original series)	M14 x 1.25 38mm	IFD-W-14	£16	£15	£13.50	£12.60

Alternative elements to fit virtually any OEM or branded filter

These are high quality alternative elements built with attention to the same international standards as the originals

If you can't find what you need here, go to www.sterlingsep.com and register for the FilterFinder in the products section

We list below our most requested filter lines. Please note that many manufacturers' products will fit multiple different housing brands so if you can't find what you

Brand	Page #	Brand	Page #
ABAC	32	INGERSOLL RAND	39
AFE	32	KAESER	40
ALUP	33	MARK/CECCATO	41
ATLAS COPCO	33-34	MTA	41
BEKO	35	OMEGA	41
BOGE	35	OMI	42
COMPAIR (BROOMWADE)	35	PUSKA	42
COMPAIR (HYDROVANE)	36	PNEUMATECH	42
COMPAIR	36	SULLAIR	42
CP	36	ULTRAFILTER	43
DOMNICK HUNTER	37	DONALDSON	43
HANKISON	37	WALKER	43
HIROSS	38	WORTHINGTON	44
HI-LINE	38	ZANDER	44
HPC	38	FILTER HOUSING DRAINS	30

Please note that brand names in use on this price list are for identification purposes only, and do not indicate that STERLING Separation Ltd supplies service kits either manufactured by, or sold by those companies or brands whose names are used.

Alternative elements to fit OEM air filter housings

ABAC (Pre 2020)

Housing	Element 1m	Element 0.01m	Element AC	STERLING code	(+Grade)			List Price
FILTER 45	45 P	45 C	45 V	CSAM0045	R	S	A	£38.70
FILTER 90	90 P	90 C	90 V	CSAM0090	R	S	A	£42.20
FILTER 125	125 P	125 C	125 V	CSAM0125	R	S	A	£45.30
FILTER 180	180 P	180 C	180 V	CSAM0180	R	S	A	£52.30
FILTER 290	290 P	290 C	290 V	CSAM0290	R	S	A	£64.60
FILTER 505	505 P	505 C	505 V	CSAM0505	R	S	A	£84.60
FILTER 685	685 P	685 C	685 V	CSAM0685	R	S	A	£96.10
FILTER 935	935 P	935 C	935 V	CSAM0935	R	S	A	£122.00
FILTER 1295	1295 P	1295 C	1295 V	CSAM1295	R	S	A	£199.00
FILTER 1890	1890 P	1890 C	1890 V	CSAM1890	R	S	A	£213.00
FILTER 2430	2430 P	2430 C	2430 V	CSAM2430	R	S	A	£269.00

ABAC (Pre 2013 appx)

For Previous ABAC range, see OMI

Housing	Element 3m	Element 1m	Element 0.01m	Element AC	STERLING code	(+Grade)			List Price	
A 60	QF/C60	PF/C60	HF/C60	CF C60	CS 0056	P	R	S	A	£29.00
A 80	QF/C80	PF/C80	HF/C80	CF C80	CS 0076	P	R	S	A	£35.90
A 120	QF/C120	PF/C120	HF/C120	CF C120	CS 0106	P	R	S	A	£46.20
A 200	QF/C200	PF/C200	HF/C200	CF C200	CS 0186	P	R	S	A	£58.10
A 340	QF/C340	PF/C340	HF/C340	CF C340	CS 0306	P	R	S	A	£81.90
A 510	QF/C510	PF/C510	HF/C510	CF C510	CS 0476	P	R	S	A	£100.00
A 800	QF/C800	PF/C800	HF/C800	CF C800	CS 0706	P	R	S	A	£127.00
A 1000	QF/C1000	PF/C1000	HF/C1000	CF C1000	CS 0946	P	R	S	A	£181.00
A 1500	QF/C1500	PF/C1500	HF/C1500	CF C1500	CS 1506	P	R	S	A	£221.00
A 2400	QF/C2400	PF/C2400	HF/C2400	CF C2400	CS 2406	P	R	S	A	£306.00

Air Filter Engineering (AFE)

Housing	Element 3m	Element 1m	Element 0.01m	Element AC	STERLING code	(+Grade)			List Price	
G0015	EA15 P	EA15 Z	EA15 H	EA15 C	CS 1050	V	Z	X	A	£25.00
G0020	EA20 P	EA20 Z	EA20 H	EA20 C	CS 1070	V	Z	X	A	£30.70
G0030	EA30 P	EA30 Z	EA30 H	EA30 C	CS 1140	V	Z	X	A	£39.60
G0055	EA55 P	EA55 Z	EA55 H	EA55 C	CS 2010	V	Z	X	A	£49.90
G0095	EA95 P	EA95 Z	EA95 H	EA95 C	CS 2020	V	Z	X	A	£64.80
G0150	EA150 P	EA150 Z	EA150 H	EA150 C	CS 2030	V	Z	X	A	£84.80
G0220	EA220 P	EA220 Z	EA220 H	EA220 C	CS 2050	V	Z	X	A	£109.00
G0290	EA290 P	EA290 Z	EA290 H	EA290 C	CS 3050	V	Z	X	A	£156.00
G0430	EA430 P	EA430 Z	EA430 H	EA430 C	CS 3075	V	Z	X	A	£189.00
G0625	EA625 P	EA625 Z	EA625 H	EA625 C	CS 5060	V	Z	X	A	£255.00
G0775	EA775 P	EA775 Z	EA775 H	EA775 C	CS 5075	V	Z	X	A	£278.00

Alup (pre 2020) For previous ALUP ranges see OMI

Housing	Element 1m	Element 0.01m	Element AC	STERLING code	(+Grade)			List Price
FILTER 45	45 P	45 C	45 V	CSAM0045	R	S	A	£38.70
FILTER 90	90 P	90 C	90 V	CSAM0090	R	S	A	£42.20
FILTER 125	125 P	125 C	125 V	CSAM0125	R	S	A	£45.30
FILTER 180	180 P	180 C	180 V	CSAM0180	R	S	A	£52.30
FILTER 290	290 P	290 C	290 V	CSAM0290	R	S	A	£64.60
FILTER 505	505 P	505 C	505 V	CSAM0505	R	S	A	£84.60
FILTER 685	685 P	685 C	685 V	CSAM0685	R	S	A	£96.10
FILTER 935	935 P	935 C	935 V	CSAM0935	R	S	A	£122.00
FILTER 1295	1295 P	1295 C	1295 V	CSAM1295	R	S	A	£199.00
FILTER 1890	1890 P	1890 C	1890 V	CSAM1890	R	S	A	£213.00
FILTER 2430	2430 P	2430 C	2430 V	CSAM2430	R	S	A	£269.00

Atlas Copco (pre 2000Appx)

Housing	Element 1m	Element 0.01m	Element AC	STERLING code	(+Grade)			List Price
6	1202 6255-02 (DD)	1202 6255-03 (PD)	1202 6264-00 (QD)	CS009	AO	AA	ACS	£25.00
13	1202 6257-02 (DD)	1202 6257-01 (PD)	1202 6281-01 (QD)	CS017	AO	AA	ACS	£35.50
25	1202 6257-04 (DD)	1202 6257-03 (PD)	1202 6268-01 (QD)	CS030	AO	AA	ACS	£43.60
40	1202 6259-02 (DD)	1202 6259-01 (PD)	1202 6281-02 (QD)	CS058	AO	AA	ACS	£59.80
13/17	1202 6259-04 (DD)	1202 6259-03 (PD)	1202 6268-02 (QD)	CS145	AO	AA	ACS	£78.30
170/195	1202 6262-02 (DD)	1202 6262-01 (PD)	1202 6263-01 (QD)	CS220	AO	AA	ACS	£102.00
295	1202 6262-04 (DD)	1202 6262-03 (PD)	1202 6263-02 (QD)	CS330	AO	AA	ACS	£146.00
375/400	1202 8573-02 (DD)	1202 8573-01 (PD)	1202 8572-00 (QD)	CS430	AO	AA	ACS	£205.00
500	1202 6273-02 (DD)	1202 6273-01 (PD)	1202 6274-00 (QD)	CS620	AO	AA	ACS	£276.00

Atlas Copco (2000 - 2013Appx)

Housing	Element 1m	Element 0.01m	Element AC	STERLING code	(+Grade)			List Price
9	2901 0520-00 (DD)	2901 0521-00 (PD)	2901 0614-00 (QD)	CSA009	AO	AA	ACS	£37.80
17	2901 0613-00 (DD)	2901 0524-00 (PD)	2901 0525-00 (QD)	CSA017	AO	AA	ACS	£41.10
32	2901 0526-00 (DD)	2901 0527-00 (PD)	2901 0528-00 (QD)	CSA032	AO	AA	ACS	£44.00
44	2901 0529-00 (DD)	2901 0530-00 (PD)	2901 0531-00 (QD)	CSA044	AO	AA	ACS	£51.00
60	2901 0532-00 (DD)	2901 0533-00 (PD)	2901 0534-00 (QD)	CSA060	AO	AA	ACS	£63.00
120	2901 0535-00 (DD)	2901 0536-00 (PD)	2901 0537-00 (QD)	CSA120	AO	AA	ACS	£82.40
150	2901 0538-00 (DD)	2901 0539-00 (PD)	2901 0540-00 (QD)	CSA150	AO	AA	ACS	£93.60
175	2901 0541-00 (DD)	2901 0542-00 (PD)	2901 0543-00 (QD)	CSA175	AO	AA	ACS	£118.00
260/280	2901 0544-00 (DD)	2901 0545-00 (PD)	2901 0546-00 (QD)	CSA260	AO	AA	ACS	£194.00
390	2906 7000-00 (DD)	2906 7001-00 (PD)	2906 7002-00 (QD)	CSA390	AO	AA	ACS	£208.00
520	2906 7003-00 (DD)	2906 7004-00 (PD)	2906 7005-00 (QD)	CSA520	AO	AA	ACS	£262.00

Atlas Copco + (Old + range pre 2020)

Housing	Element 1m	Element 0.01m	Element AC	STERLING code	(+Grade)			List Price
10+	10+ (DD)	10+ (PD)	10+ (QD)	CSAM0045	AO	AA	ACS	£38.70
20+	20+ (DD)	20+ (PD)	20+ (QD)	CSAM0090	AO	AA	ACS	£42.20
35+	35+ (DD)	35+ (PD)	35+ (QD)	CSAM0125	AO	AA	ACS	£45.30
50+	50+ (DD)	50+ (PD)	50+ (QD)	CSAM0180	AO	AA	ACS	£52.30
70+	70+ (DD)	70+ (PD)	70+ (QD)	CSAM0290	AO	AA	ACS	£64.60
130+	130+ (DD)	130+ (PD)	130+ (QD)	CSAM0505	AO	AA	ACS	£84.60
170+	170+ (DD)	170+ (PD)	170+ (QD)	CSAM0685	AO	AA	ACS	£96.10
210+	210+ (DD)	210+ (PD)	210+ (QD)	CSAM0935	AO	AA	ACS	£122.00
310+	310+ (DD)	310+ (PD)	310+ (QD)	CSAM1295	AO	AA	ACS	£199.00
425+	425+ (DD)	210+ (PD)	425+ (QD)	CSAM1890	AO	AA	ACS	£213.00
550+	550+ (DD)	210+ (PD)	550+ (QD)	CSAM2430	AO	AA	ACS	£269.00

Atlas Copco + (Current)

Housing	Element 1m	Element 0.01m	Element AC	STERLING code	(+Grade)			List Price
7+	7+ (DD)	7+ (PD)	7+ (QD)	CSAC 7+	DD	PD	QD	£42.00
15+	15+ (DD)	15+ (PD)	15+ (QD)	CSAC 15+	DD	PD	QD	£63.00
25+	25+ (DD)	25+ (PD)	25+ (QD)	CSAC 25+	DD	PD	QD	£77.00
45+	45+ (DD)	45+ (PD)	45+ (QD)	CSAC 45+	DD	PD	QD	£99.00
75+	75+ (DD)	75+ (PD)	75+ (QD)	CSAC 75+	DD	PD	QD	£139.00
110+	110+ (DD)	110+ (PD)	110+ (QD)	CSAC 110+	DD	PD	QD	£174.00
145+	145+ (DD)	145+ (PD)	145+ (QD)	CSAC 145+	DD	PD	QD	£205.00
180+	180+ (DD)	180+ (PD)	180+ (QD)	CSAC 180+	DD	PD	QD	£231.00
240+	240+ (DD)	240+ (PD)	240+ (QD)	CSAC 240+	DD	PD	QD	£299.00
300+	300+ (DD)	300+ (PD)	300+ (QD)	CSAC 300+	DD	PD	QD	£339.00
360+	360+ (DD)	360+ (PD)	360+ (QD)	CSAC 360+	DD	PD	QD	£378.00
430+	430+ (DD)	430+ (PD)	430+ (QD)	CSAC 430+	DD	PD	QD	£434.00
525+	525+ (DD)	525+ (PD)	525+ (QD)	CSAC 525+	DD	PD	QD	£459.00
630+	630+ (DD)	630+ (PD)	630+ (QD)	CSAC 630+	DD	PD	QD	£499.00



Atlas Copco UD+ (Current)

Housing	Element 1m & 0.01m	STERLING code	List Price
7+	7+ (UD)	CSAC 7+ UD	£54.00
15+	15+ (UD)	CSAC 15+ UD	£82.00
25+	25+ (UD)	CSAC 25+ UD	£99.00
45+	45+ (UD)	CSAC 45+ UD	£129.00
75+	75+ (UD)	CSAC 75+ UD	£180.00
110+	110+ (UD)	CSAC 110+ UD	£226.00
145+	145+ (UD)	CSAC 145+ UD	£266.00
180+	180+ (UD)	CSAC 180+ UD	£300.00
240+	240+ (UD)	CSAC 240+ UD	£389.00
300+	300+ (UD)	CSAC 300+ UD	£440.00
360+	360+ (UD)	CSAC 360+ UD	£491.00
430+	430+ (UD)	CSAC 430+ UD	£564.00
525+	525+ (UD)	CSAC 525+ UD	£596.00
630+	630+ (UD)	CSAC 630+ UD	£648.00

Beko Clearpoint

Housing	Element 5m	Element 1m	Element 0.01m	Element AC	STERLING code	(+Grade)				List Price
S040	04 G	04 F	04 S	04A	CSBK04	P	M	S	A	£48.20
S050	05G	05 F	05 S	05A	CSBK05	P	M	S	A	£55.70
S055	06 G	06 F	06 S	06A	CSBK06	P	M	S	A	£62.60
S075	07 G	07 F	07 S	07A	CSBK07	P	M	S	A	£69.20
M010	10 G	10 F	10 S	10A	CSBK10	P	M	S	A	£78.60
M012	12G	12 F	12 S	12A	CSBK12	P	M	S	A	£82.50
M015	15 G	15 F	15 S	15A	CSBK15	P	M	S	A	£114.00
M018	18 G	18 F	18 S	18A	CSBK18	P	M	S	A	£129.00
M020	20 G	20 F	20 S	20A	CSBK20	P	M	S	A	£140.00
M022	22 G	22 F	22 S	22A	CSBK22	P	M	S	A	£170.00
M023	23 G	23 F	23 S	23A	CSBK23	P	M	S	A	£210.00
M025	25 G	25 F	25 S	25A	CSBK25	P	M	S	A	£274.00
M027	27 G	27 F	27 S	27A	CSBK27	P	M	S	A	£296.00
M030	30 G	30 F	30 S	30A	CSBK30	P	M	S	A	£403.00
M032	32 G	32 F	32 S	32A	CSBK32	P	M	S	A	£456.00

Boge ('F' range)

Housing	Element 1m	Element 0.01m	Element AC	STERLING code	(+Grade)				List Price
F6	F6 P	F6 M	F6A	CSEV 010	AO	AA	ACS	£48.20	
F9 or F12	F9 P or F12 P	F9 M or F12 M	F9 A or F12 A	CSEV 015	AO	AA	ACS	£56.90	
F18	F18 P	F18 M	F18A	CSEV 020	AO	AA	ACS	£64.80	
F36	F36 P	F36 M	F36A	CSEV 025	AO	AA	ACS	£71.50	
F65	F65 P	F65 M	F65A	CSEV 030	AO	AA	ACS	£79.20	
F95	F95 P	F95 M	F95A	CSEV 035	AO	AA	ACS	£113.00	
F130	F130 P	F130 M	F130A	CSEV 040	AO	AA	ACS	£136.00	
F190	F190 P	F190 M	F190A	CSEV 045	AO	AA	ACS	£163.00	
F260	F260 P	F260 M	F260A	CSEV 050	AO	AA	ACS	£184.00	
F380	F380 P	F380 M	F380A	CSEV 055	AO	AA	ACS	£262.00	

Boge (Older, pre 'F' range, approx 2014 on)

Housing	Element 1m	Element 0.01m	Element AC	STERLING code	(+Grade)				List Price
5	5 V	5 FP	5A	CSB1/5	V	X	A	£23.40	
10	10 V	10 FP	10A	CSB1/10	V	X	A	£24.40	
12	12 V	12 FP	12A	CSB1/12	V	X	A	£30.80	
20	20 V	20 FP	20A	CSB1/20	V	X	A	£39.30	
30	30 V	30 FP	30A	CSB1/30	V	X	A	£48.80	
50	50 V	50 FP	50A	CSB1/50	V	X	A	£64.70	
80	80 V	80 FP	80A	CSB1/80	V	X	A	£83.80	
120	120 V	120 FP	120A	CSB1/120	V	X	A	£108.00	
160	160 V	160 FP	160A	CSB1/160	V	X	A	£154.00	
250	250 V	250 FP	250A	CSB1/250	V	X	A	£188.00	

Compair Broomwade (pre 1995)

Housing	Element 1m	Element 0.01m	Element AC	STERLING code	(+Grade)				List Price
6A	98245 121	98245 141	98245 161	CS009	AO	AA	ACS	£25.00	
13A	98245 122	98245 142	98245 162	CS017	AO	AA	ACS	£35.50	
25A	98245 123	98245 143	98245 163	CS030	AO	AA	ACS	£43.60	
40A	98245 125	98245 145	98245 165	CS058	AO	AA	ACS	£59.80	
65A/85A	98245 126	98245 146	98245 166	CS145	AO	AA	ACS	£78.30	
170A/195A	98245 127	98245 147	98245 167	CS220	AO	AA	ACS	£102.00	
295A	98245 128	98245 148	98245 168	CS330	AO	AA	ACS	£146.00	
375A/400A	98245 129	98245 149	98245 169	CS430	AO	AA	ACS	£205.00	
500A	98245 130	98245 150	98245 170	CS620	AO	AA	ACS	£276.00	

Compair Hydrovane (pre 1995)

Housing	Element 1m	Element 0.01m	Element AC	STERLING code	(+Grade)	List Price
100	GP 100 E	HE 100 E	OR 100 E	CS009	AO AA ACS	£25.00
150	GP 150 E	HE 150 E	OR 150 E	CS017	AO AA ACS	£35.50
200	GP 200 E	HE 200 E	OR 200 E	CS030	AO AA ACS	£43.60
250	GP 250 E	HE 250 E	OR 250 E	CS058	AO AA ACS	£59.80
300/350	GP 300E/GP350E	HE 300E/HE350E	OR300E/OR350E	CS145	AO AA ACS	£78.30
375/400	GP 375E/GP400E	HE 375E/HE400E	OR375E/OR400E	CS220	AO AA ACS	£102.00
450/500	GP 450E/GP500E	HE 450E/HE500E	OR450E/OR500E	CS330	AO AA ACS	£146.00
520/530	GP 520E/GP530E	HE 520E/HE530E	OR520E/OR530E	CS430	AO AA ACS	£205.00
600	GP 600 E	HE 600 E	OR 600 E	CS620	AO AA ACS	£276.00

Compair ('CF' & 'X' ranges) Fits both 'GB' & 'NB' versions

Housing	Element 1m	Element 0.01m	Element AC	STERLING code	(+Grade)	List Price
CE0006N	010AO	010AA	010AC	CSEV 010	AO AA AC	£48.20
CE012N	015AO	015AA	015AC	CSEV 015	AO AA AC	£56.90
CE0018N	020AO	020AA	020AC	CSEV 020	AO AA AC	£64.80
CE0036N	025AO	025AA	025AC	CSEV 025	AO AA AC	£71.50
CE0066N	030AO	030AA	030AC	CSEV 030	AO AA AC	£79.20
CE0096N	035AO	035AA	035AC	CSEV 035	AO AA AC	£113.00
CE0132N	040AO	040AA	040AC	CSEV 040	AO AA AC	£136.00
CE0198N	045AO	045AA	045AC	CSEV 045	AO AA AC	£163.00
CE0258N	050AO	050AA	050AC	CSEV 050	AO AA AC	£184.00
CE0372N	055AO	055AA	055AC	CSEV 055	AO AA AC	£262.00
CE0600N	060AO	060AA	060AC	CSEV 060	AO AA AC	£181.00

Compair (pre 'CF' & 'X' ranges)

Housing	Element 1m	Element 0.01m	Element AC	STERLING code	(+Grade)	List Price
6	CE0005 B	CE0005 C	CE0005 D	CSC 006	AO AA AC	£29.00
12	CE0010 B	CE0010 C	CE0010 D	CSC 012	AO AA AC	£41.20
18	CE0018 B	CE0018 C	CE0018 D	CSC 018	AO AA AC	£53.50
36	CE0036 B	CE0036 C	CE0036 D	CSC 036	AO AA AC	£75.40
048/072/087	CE0048/72/87 B	CE0048/72/87 C	CE0048/72/87 D	CSC 048	AO AA AC	£98.70
0120/0132	CE0120/132 B	CE0120/132 C	CE0120/132 D	CSC 120	AO AA AC	£131.00
198	CE0198 B	CE0198 C	CE0198 D	CSC 198	AO AA AC	£189.00
240/258	CE0240/258 B	CE0240/258 C	CE0240/258 D	CSC 240	AO AA AC	£269.00
372	CE0372 B	CE0372 C	CE0372 D	CSC 372	AO AA AC	£362.00

CP (pre 2020)

Housing	Element 1m	Element 0.01m	Element AC	STERLING code	(+Grade)	List Price
FILTER 45	45 P	45 C	45 V	CSAM0045	R S A	£38.70
FILTER 90	90 P	90 C	90 V	CSAM0090	R S A	£42.20
FILTER 125	125 P	125 C	125 V	CSAM0125	R S A	£45.30
FILTER 180	180 P	180 C	180 V	CSAM0180	R S A	£52.30
FILTER 290	290 P	290 C	290 V	CSAM0290	R S A	£64.60
FILTER 505	505 P	505 C	505 V	CSAM0505	R S A	£84.60
FILTER 685	685 P	685 C	685 V	CSAM0685	R S A	£96.10
FILTER 935	935 P	935 C	935 V	CSAM0935	R S A	£122.00
FILTER 1295	1295 P	1295 C	1295 V	CSAM1295	R S A	£199.00
FILTER 1890	1890 P	1890 C	1890 V	CSAM1890	R S A	£213.00
FILTER 2430	2430 P	2430 C	2430 V	CSAM2430	R S A	£269.00

Domnick Hunter (Pre 1995)

Housing	Element 5m	Element 1m	Element 0.01m	Element AC	STERLING code	(+Grade)				List Price
009G/006G	K009 / K006 PF	K009 / K006 GPP	K009 / K006 OFP	K009 / K006AC	CS009	PF	AO	AA	AC	£25.00
017G/013G	K017 / K013 PF	K017 / K013 GPP	K017 / K013 OFP	K017 / K013AC	CS017	PF	AO	AA	AC	£35.50
030G/025G	K030 / K025 PF	K030 / K025 GPP	K030 / K025 OFP	K030 / K025AC	CS030	PF	AO	AA	AC	£43.60
058G/040G	K058 / K040 PF	K058 / K040 GPP	K058 / K040 OFP	K058 / K040AC	CS058	PF	AO	AA	AC	£59.80
145G/085G	K145 / K085 PF	K145 / K085 GPP	K145 / K085 OFP	K145 / K085AC	CS145	PF	AO	AA	AC	£78.30
220G/195G	K220 / K195 PF	K220 / K195 GPP	K220 / K195 OFP	K220 / K195AC	CS220	PF	AO	AA	AC	£102.00
330G/295G	K330 / K295 PF	K330 / K295 GPP	K330 / K295 OFP	K330 / K295AC	CS330	PF	AO	AA	AC	£146.00
430G/400G	K430 / K400 PF	K430 / K400 GPP	K430 / K400 OFP	K430 / K400AC	CS430	PF	AO	AA	AC	£205.00
620G/500G	K620 / K500 PF	K620 / K500 GPP	K620 / K500 OFP	K620 / K500AC	CS620	PF	AO	AA	AC	£276.00

Domnick Hunter /Parker Evolution

Housing	Element 1m	Element 0.01m	Element AC	STERLING code	(+Grade)				List Price
DH 005	005AO	005AA	005AC	CSEV 005	AO	AA	AC	£37.50	
DH 010	010AO	010AA	010AC	CSEV 010	AO	AA	AC	£48.20	
DH 015	015AO	015AA	015AC	CSEV 015	AO	AA	AC	£56.90	
DH 020	020AO	020AA	020AC	CSEV 020	AO	AA	AC	£64.80	
DH 025	025AO	025AA	025AC	CSEV 025	AO	AA	AC	£71.50	
DH 030	030AO	030AA	030AC	CSEV 030	AO	AA	AC	£79.20	
DH 035	035AO	035AA	035AC	CSEV 035	AO	AA	AC	£113.00	
DH 040	040AO	040AA	040AC	CSEV 040	AO	AA	AC	£136.00	
DH 045	045AO	045AA	045AC	CSEV 045	AO	AA	AC	£163.00	
DH 050	050AO	050AA	050AC	CSEV 050	AO	AA	AC	£184.00	
DH 055	055AO	055AA	055AC	CSEV 055	AO	AA	AC	£262.00	
DH 060	060AO	060AA	060AC	CSEV 060	AO	AA	AC	£181.00	
DH 100	100AO	100AA	100AC	CSEV 100	AO	AA	AC	£245.00	
DH 150	150AO	150AA	150AC	CSEV 150	AO	AA	AC	£268.00	
DH 200	200AO	200AA	200AC	CSEV 200	AO	AA	AC	£350.00	

Hankison (Aluminium end caps - factory order probably req'd)

Housing	Element 3m	Element 1m	Element 0.01m	Element AC	STERLING code	(+Grade)				(+)	List Price
HF12	E 9 12	E 7 12	E 5 12	E 1 12	CS	9	7	5	1	E12	£98.80
HF16	E 9 16	E 7 16	E 5 16	E 1 16	CS	9	7	5	1	E16	£105.00
HF20	E 9 20	E 7 20	E 5 20	E 1 20	CS	9	7	5	1	E20	£110.00
HF24	E 9 24	E 7 24	E 5 24	E 1 24	CS	9	7	5	1	E24	£123.00
HF28	E 9 28	E 7 28	E 5 28	E 1 28	CS	9	7	5	1	E28	£139.00
HF32	E 9 32	E 7 32	E 5 32	E 1 32	CS	9	7	5	1	E32	£169.00
HF36	E 9 36	E 7 36	E 5 36	E 1 36	CS	9	7	5	1	E36	£217.00
HF40	E 9 40	E 7 40	E 5 40	E 1 40	CS	9	7	5	1	E40	£272.00
HF44	E 9 44	E 7 44	E 5 44	E 1 44	CS	9	7	5	1	E44	£291.00
HF48	E 9 48	E 7 48	E 5 48	E 1 48	CS	9	7	5	1	E48	£305.00
HF52	E 9 52	E 7 52	E 5 52	E 1 52	CS	9	7	5	1	E52	£518.00
HF54	E 9 54	E 7 54	E 5 54	E 1 54	CS	9	7	5	1	E54	£518.00

Hankison NGF range (Also fits Deltech 300 range)

Housing	Element 3m	Element 1m	Element 0.01m	Element AC	STERLING code	(+Grade)				List Price	
NGF 02	02-SF	02-PF	02-HF	02-CF	CSD02	S	P	H	C	3	£124.00
NGF 03	03-SF	03-PF	03-HF	03-CF	CSD03	S	P	H	C	3	£128.00
NGF 04	04-SF	04-PF	04-HF	04-CF	CSD04	S	P	H	C	3	£146.00
NGF 06	06-SF	06-PF	06-HF	06-CF	CSD06	S	P	H	C	3	£169.00
NGF 07	07-SF	07-PF	07-HF	07-CF	CSD07	S	P	H	C	3	£202.00
NGF 08	08-SF	08-PF	08-HF	08-CF	CSD08	S	P	H	C	3	£226.00
NGF 10	10-SF	10-PF	10-HF	10-CF	CSD10	S	P	H	C	3	£254.00
NGF 11	11-SF	11-PF	11-HF	11-CF	CSD11	S	P	H	C	3	£315.00
NGF 12	12-SF	12-PF	12-HF	12-CF	CSD12	S	P	H	C	3	£368.00
NGF 13	13-SF	13-PF	13-HF	13-CF	CSD13	S	P	H	C	3	£491.00
NGF 14	14-SF	14-PF	14-HF	14-CF	CSD14	S	P	H	C	3	£535.00
NGF 15	15-SF	15-PF	15-HF	15-CF	CSD15	S	P	H	C	3	£572.00
NGF 16	16-SF	16-PF	16-HF	16-CF	CSD16	S	P	H	C	3	£658.00
NGF 17	17-SF	17-PF	17-HF	17-CF	CSD17	S	P	H	C	3	£742.00

Hiross

Housing	Element 5m	Element 1m	Element 0.01m	Element AC	STERLING code	(+Grade)				List Price
HF 004/010	HF 004 Q	HF 004 P	HF 004 S	HF 004 C	CSH 004	Q	P	S	C	£30.80
HF 007/016	HF 007 Q	HF 007 P	HF 007 S	HF 007 C	CSH 007	Q	P	S	C	£36.10
HF 015/022	HF 015 Q	HF 015 P	HF 015 S	HF 015 C	CSH 015	Q	P	S	C	£38.20
HF 024/030	HF 024 Q	HF 024 P	HF 024 S	HF 024 C	CSH 024	Q	P	S	C	£44.60
HF 035/045	HF 035 Q	HF 035 P	HF 035 S	HF 035 C	CSH 035	Q	P	S	C	£52.00
HF 060/072	HF 060 Q	HF 060 P	HF 060 S	HF 060 C	CSH 060	Q	P	S	C	£67.90
HF 090/135	HF 090 Q	HF 090 P	HF 090 S	HF 090 C	CSH 090	Q	P	S	C	£84.80
HF 120/205	HF 120 Q	HF 120 P	HF 120 S	HF 120 C	CSH 120	Q	P	S	C	£112.00
HF 150/180	HF 150 Q	HF 150 P	HF 150 S	HF 150 C	CSH 150	Q	P	S	C	£127.00
HF 175	HF 175 Q	HF 175 P	HF 175 S	HF 175 C	CSH 175	Q	P	S	C	£109.00
HF 200/260	HF 200 Q	HF 200 P	HF 200 S	HF 200 C	CSH 200	Q	P	S	C	£210.00
HF 240/280	HF 240 Q	HF 240 P	HF 240 S	HF 240 C	CSH 240	Q	P	S	C	£210.00
HF 250	HF 250 Q	HF 250 P	HF 250 S	HF 250 C	CSH 250	Q	P	S	C	£226.00
HF 300	HF 300 Q	HF 300 P	HF 300 S	HF 300 C	CSH 300	Q	P	S	C	£159.00
HF 370	HF 370 Q	HF 240 P	HF 240 S	HF 240 C	CSH 240	Q	P	S	C	£210.00

Hi-Line Industries

Housing	Element 3m	Element 1m	Element 0.01m	Element AC	STERLING code	(+Grade)				List Price
HF36-N	HE36 2	HE36 3	HE36 4	HE36 5	CS 1050	V	Z	X	A	£36.10
HF50-N	HE50 2	HE50 3	HE50 4	HE50 5	CS 1070	V	Z	X	A	£38.20
HF72-N	HE72 2	HE72 3	HE72 4	HE72 5	CS 1140	V	Z	X	A	£44.60
HF75-N	HE72 2	HE72 3	HE72 4	HE72 5	CS 1140	V	Z	X	A	£52.00
HF120-N	HE120 2	HE120 3	HE120 4	HE120 5	CS 2010	V	Z	X	A	£67.90
HF210-N	HE210 2	HE210 3	HE210 4	HE210 5	CS 2020	V	Z	X	A	£84.80
HF320-N	HE320 2	HE320 3	HE320 4	HE320 5	CS 2030	V	Z	X	A	£112.00
HF500-N	HE500 2	HE500 3	HE500 4	HE500 5	CS 2050	V	Z	X	A	£127.00
HF630-N	HE630 2	HE630 3	HE630 4	HE630 5	CS 3050	V	Z	X	A	£109.00
HF850-N	HE850 2	HE850 3	HE850 4	HE850 5	CS 3075	V	Z	X	A	£210.00
HF1400-N	HE1400 2	HE1400 3	HE1400 4	HE1400 5	CS 5060	V	Z	X	A	£210.00
HF1700-N	HE1700 2	HE1700 3	HE1700 4	HE1700 5	CS 5075	V	Z	X	A	£226.00

HPC (pre 2005) For HPC elements between 2005 - to 2017 see DH Evolution elements

Housing	Element 3m	Element 1m	Element 0.01m	Element AC	STERLING code	(+Grade)				List Price
009G/006G	K009 / K006 PF	K009 / K006 AO	K009 / K006 AA	K009 / K006 ACS	CS009	PF	AO	AA	ACS	£25.00
017G/013G	K017 / K013 PF	K017 / K013 AO	K017 / K013 AA	K017 / K013 ACS	CS017	PF	AO	AA	ACS	£35.50
030G/025G	K030 / K025 PF	K030 / K025 AO	K030 / K025 AA	K030 / K025 ACS	CS030	PF	AO	AA	ACS	£43.60
058G/040G	K058 / K040 PF	K058 / K040 AO	K058 / K040 AA	K058 / K040 ACS	CS058	PF	AO	AA	ACS	£59.80
145G/085G	K145 / K085 PF	K145 / K085 AO	K145 / K085 AA	K145 / K085 ACS	CS145	PF	AO	AA	ACS	£78.30
220G/195G	K220 / K195 PF	K220 / K195 AO	K220 / K195 AA	K220 / K195 ACS	CS220	PF	AO	AA	ACS	£102.00
330G/295G	K330 / K295 PF	K330 / K295 AO	K330 / K295 AA	K330 / K295 ACS	CS330	PF	AO	AA	ACS	£146.00
430G/400G	K430 / K400 PF	K430 / K400 AO	K430 / K400 AA	K430 / K400 ACS	CS430	PF	AO	AA	ACS	£205.00
620G/500G	K620 / K500 PF	K620 / K500 AO	K620 / K500 AA	K620 / K500 ACS	CS620	PF	AO	AA	ACS	£276.00

Ingersoll Rand - AC series (note sizes 19, 40 & 64 are not available)

Housing	Element 1m	Element 0.01m	Element AC	STERLING code	(+Grade)	List Price
123	123 GP	123 HE	123 AC	CSIR123	GP HE AC	£204.00
216	216 GP	216 HE	216 AC	CSIR216	GP HE AC	£214.00
275	275 GP	275 HE	275 AC	CSIR275	GP HE AC	£239.00
350	350 GP	350 HE	350 AC	CSIR350	GP HE AC	£317.00
481	481 GP	481 HE	481 AC	CSIR481	GP HE AC	£360.00
563	563 GP	563 HE	563 AC	CSIR563	GP HE AC	£389.00
706	706 GP	706 HE	706 AC	CSIR706	GP HE AC	£475.00
850	850 GP	850 HE	850 AC	CSIR850	GP HE AC	£667.00
1100	1100 GP	1100 HE	1100 AC	CSIR1100	GP HE AC	£780.00
1380	1380 GP	1380 HE	1380 AC	CSIR1380	GP HE AC	£825.00
424 (FLANGE)	424 GP	424 HE	424 AC	CSIR424F	GP HE AC	£189.00
699 (FLANGE)	699 GP	699 HE	699 AC	CSIR699F	GP HE AC	£266.00
1314 (FLANGE)	1314 GP	1314 HE	1314 AC	CSIR1314F	GP HE AC	£510.00

Ingersoll Rand - F series

Housing	Element 1m	Element 0.01m	Element AC	STERLING code	(+Grade)	List Price
F35 I	35 IG	35 IH	35 IA	CSIRF_035I	G H A	£106.00
F71 I	71 IG	71 IH	71 IA	CSIRF_071I	G H A	£119.00
F108 I	108 IG	108 IH	108 IA	CSIRF_108I	G H A	£133.00
F144 I	144 IG	144 IH	144 IA	CSIRF_144I	G H A	£191.00
F178 I	178 IG	178 IH	178 IA	CSIRF_178I	G H A	£191.00
F212 I	212 IG	212 IH	212 IA	CSIRF_212I	G H A	£191.00
F395 I	395 IG	395 IH	395 IA	CSIRF_395I	G H A	£227.00
F424 I	424 IG	424 IH	424 IA	CSIRF_424I	G H A	£227.00
F577 I	577 IG	577 IH	577 IA	CSIRF_577I	G H A	£383.00
F791 I	791 IG	791 IH	791 IA	CSIRF_791I	G H A	£383.00
F985 I	985 IG	985 IH	985 IA	CSIRF_985I	G H A	£432.00
F1155 I	1155 IG	1155 IH	1155 IA	CSIRF_1155I	G H A	£481.00
F1529 I	1529 IG	1529 IH	1529 IA	CSIRF_1529I	G H A	£509.00
F1817 I	1817 IG	1817 IH	1817 IA	CSIRF_1817I	G H A	£613.00
F2378 I	2378 IG	2378 IH	2378 IA	CSIRF_2378I	G H A	£769.00

Ingersoll Rand - FA series

Housing	Element 1m	Element 0.01m	Element AC	STERLING code	(+Grade)	List Price
FA30	FA30G	FA30H	FA30A	CSIRFA_030I	G H A	£119.00
FA40	FA40G	FA40H	FA40A	CSIRFA_040I	G H A	£126.00
FA75	FA75G	FA75H	FA75A	CSIRFA_075I	G H A	£135.00
FA110	FA110G	FA110H	FA110A	CSIRFA_110I	G H A	£144.00
FA150	FA150G	FA150H	FA150A	CSIRFA_150I	G H A	£204.00
FA190	FA190G	FA190H	FA190A	CSIRFA_190I	G H A	£213.00
FA230	FA230G	FA230H	FA230A	CSIRFA_230I	G H A	£230.00
FA400	FA400G	FA400H	FA400A	CSIRFA_400I	G H A	£252.00
FA490	FA490G	FA490H	FA490A	CSIRFA_490I	G H A	£263.00
FA600	FA600G	FA600H	FA600A	CSIRFA_600I	G H A	£285.00
FA800	FA800G	FA800H	FA800A	CSIRFA_800I	G H A	£301.00
FA1000	FA1000G	FA1000H	FA1000A	CSIRFA_1000I	G H A	£344.00
FA1200	FA1200G	FA1200H	FA1200A	CSIRFA_1200I	G H A	£432.00
FA1560	FA1560G	FA1560H	FA1560A	CSIRFA_1560I	G H A	£521.00
FA1830	FA1830G	FA1830H	FA1830A	CSIRFA_1830I	G H A	£570.00
FA2300	FA2300G	FA2300H	FA2300A	CSIRFA_2300I	G H A	£627.00
FA2700	FA2700G	FA2700H	FA2700A	CSIRFA_2700I	G H A	£660.00

Ingersoll Rand (pre 1995)

Housing	Element 1m	Element 0.01m	Element AC	STERLING code	(+Grade)	List Price
E4/5	E4 or E5 AO	E4 or E5 AA	E4 or E5 AC	CS009	AO AA AC	£25.00
E8/10	E8 or E10 AO	E8 or E10 AA	E8 or E10 AC	CS017	AO AA AC	£35.50
E15/18	E15 or E18 AO	E15 or E18 AA	E15 or E18 AC	CS030	AO AA AC	£43.60
E24/36	E24 or E36 AO	E24 or E36 AA	E24 or E36 AC	CS058	AO AA AC	£59.80
E39/48	E39 or E48 AO	E39 or E48 AA	E39 or E48 AC	CS145	AO AA AC	£78.30
E105/119	E105 or E119 AO	E105 or E119 AA	E105 or E119 AC	CS220	AO AA AC	£102.00
E180/198	E180 or E198 AO	E180 or E198 AA	E180 or E198 AC	CS330	AO AA AC	£146.00
E239/240	E239 or E240 AO	E239 or E240 AA	E239 or E240 AC	CS430	AO AA AC	£205.00
E300/372	E300 or E372 AO	E300 or E372 AA	E300 or E372 AC	CS620	AO AA AC	£276.00

Kaeser (Aluminium end caps - factory order)

Housing	Element 3m	Element 1m	Element 0.01m	Element AC	STERLING code	(+Grade)			(+)	List Price	
6	E B 6	E C 6	E E 6	E G 6	CS	9	7	5	1	E12	£98.80
10	E B 10	E C 10	E E 10	E G 10	CS	9	7	5	1	E16	£105.00
18	E B 18	E C 18	E E 18	E G 18	CS	9	7	5	1	E20	£110.00
28	E B 28	E C 28	E E 28	E G 28	CS	9	7	5	1	E24	£123.00
48	E B 48	E C 48	E E 48	E G 48	CS	9	7	5	1	E28	£139.00
71	E B 71	E C 71	E E 71	E G 71	CS	9	7	5	1	E32	£169.00
107	E B 107	E C 107	E E 107	E G 107	CS	9	7	5	1	E36	£217.00
138	E B 138	E C 138	E E 138	E G 138	CS	9	7	5	1	E40	£272.00
177	E B 177	E C 177	E E 177	E G 177	CS	9	7	5	1	E44	£291.00
221	E B 221	E C 221	E E 221	E G 221	CS	9	7	5	1	E48	£305.00

Mark / Ceccato (pre 2013Appx)

Housing	Element 3m	Element 1m	Element 0.01m	Element AC	STERLING code	(+Grade)				List Price
MC 10 H	10 FPRO	10 FPRE	10 FMM	10 FCA	CS 0056	P	R	S	A	£29.00
MC 13 H	13 FPRO	13 FPRE	13 FMM	13 FCA	CS 0076	P	R	S	A	£35.90
MC 20 H	20 FPRO	20 FPRE	20 FMM	20 FCA	CS 0106	P	R	S	A	£46.20
MC33 H	33 FPRO	33 FPRE	33 FMM	33 FCA	CS 0186	P	R	S	A	£58.10
MC 60 H	60 FPRO	60 FPRE	60 FMM	60 FCA	CS 0306	P	R	S	A	£81.90
MC 85 H	85 FPRO	85 FPRE	85 FMM	85 FCA	CS 0476	P	R	S	A	£100.00
MC 130 H	130 FPRO	130 FPRE	130 FMM	130 FCA	CS 0706	P	R	S	A	£127.00
MC 170 H	170 FPRO	170 FPRE	170 FMM	170 FCA	CS 0946	P	R	S	A	£181.00
MC 250 H	250 FPRO	250 FPRE	250 FMM	250 FCA	CS 1506	P	R	S	A	£221.00
MC 400 H	400 FPRO	400 FPRE	400 FMM	400 FCA	CS 2406	P	R	S	A	£324.00

Mark / Ceccato (pre 2020)

Housing	Element 1m	Element 0.01m	Element AC	STERLING code	(+Grade)				List Price
FILTER 45	45 P	45 C	45 V	CSAM0045	R	S	A	£38.70	
FILTER 90	90 P	90 C	90 V	CSAM0090	R	S	A	£42.20	
FILTER 125	125 P	125 C	125 V	CSAM0125	R	S	A	£45.30	
FILTER 180	180 P	180 C	180 V	CSAM0180	R	S	A	£52.30	
FILTER 290	290 P	290 C	290 V	CSAM0290	R	S	A	£64.60	
FILTER 505	505 P	505 C	505 V	CSAM0505	R	S	A	£84.60	
FILTER 685	685 P	685 C	685 V	CSAM0685	R	S	A	£96.10	
FILTER 935	935 P	935 C	935 V	CSAM0935	R	S	A	£122.00	
FILTER 1295	1295 P	1295 C	1295 V	CSAM1295	R	S	A	£199.00	
FILTER 1890	1890 P	1890 C	1890 V	CSAM1890	R	S	A	£213.00	
FILTER 2430	2430 P	2430 C	2430 V	CSAM2430	R	S	A	£269.00	

MTA

Housing	Element 3m	Element 1m	Element 0.01m	Element AC	STERLING code	(+Grade)				List Price
HEF 005	1/06050 P	1/06050 M	1/06050 S	1/06050A	CS 0056	P	R	S	A	£29.00
HEF 007	1/07050 P	1/07050 M	1/07050 S	1/07050A	CS 0076	P	R	S	A	£35.90
HEF 010	1/14050 P	1/14050 M	1/14050 S	1/14050A	CS 0106	P	R	S	A	£46.20
HEF 018	1/12075 P	1/12075 M	1/12075 S	1/12075A	CS 0186	P	R	S	A	£58.10
HEF 030	1/22075 P	1/22075 M	1/22075 S	1/22075A	CS 0306	P	R	S	A	£81.90
HEF 047	1/32075 P	1/32075 M	1/32075 S	1/32075A	CS 0476	P	R	S	A	£100.00
HEF 070	1/50075 P	1/50075 M	1/50075 S	1/50075A	CS 0706	P	R	S	A	£127.00
HEF 094	1/51090 P	1/51090 M	1/51090 S	1/51090A	CS 0946	P	R	S	A	£181.00
HEF 150	1/76090 P	1/76090 M	1/76090 S	1/76090A	CS 1506	P	R	S	A	£221.00
HEF 240	1/75140 P	1/75140 M	1/75140 S	1/75140A	CS 2406	P	R	S	A	£324.00

Omega (Original OEM Elements)

Housing	Element 3m	Element 1m	Element 0.01m	Element AC	STERLING code	(+Grade)				List Price
HEF 005	1/06050 P	1/06050 M	1/06050 S	1/06050A	CS 0056	P	R	S	A	£29.00
HEF 007	1/07050 P	1/07050 M	1/07050 S	1/07050A	CS 0076	P	R	S	A	£35.90
HEF 010	1/14050 P	1/14050 M	1/14050 S	1/14050A	CS 0106	P	R	S	A	£46.20
HEF 018	1/12075 P	1/12075 M	1/12075 S	1/12075A	CS 0186	P	R	S	A	£58.10
HEF 030	1/22075 P	1/22075 M	1/22075 S	1/22075A	CS 0306	P	R	S	A	£81.90
HEF 047	1/32075 P	1/32075 M	1/32075 S	1/32075A	CS 0476	P	R	S	A	£100.00
HEF 070	1/50075 P	1/50075 M	1/50075 S	1/50075A	CS 0706	P	R	S	A	£127.00
HEF 094	1/51090 P	1/51090 M	1/51090 S	1/51090A	CS 0946	P	R	S	A	£181.00
HEF 150	1/76090 P	1/76090 M	1/76090 S	1/76090A	CS 1506	P	R	S	A	£221.00
HEF 240	1/75140 P	1/75140 M	1/75140 S	1/75140A	CS 2406	P	R	S	A	£324.00

OMI

Housing	Element 3m	Element 1m	Element 0.01m	Element AC	STERLING code	(+Grade)				List Price
0004 / 005	0004 QF	0004 PF	0004 HF	0004 CF	CSO 004	QF	PF	HF	CF	£27.60
0008 / 010	0008 QF	0008 PF	0008 HF	0008 CF	CSO 008	QF	PF	HF	CF	£35.30
0016 / 0018	0016 QF	0016 PF	0016 HF	0016 CF	CSO 016	QF	PF	HF	CF	£41.90
0025 / 0034	0025 QF	0025 PF	0025 HF	0025 CF	CSO 025	QF	PF	HF	CF	£46.40
0036 / 0050	0036 QF	0036 PF	0036 HF	0036 CF	CSO 036	QF	PF	HF	CF	£56.20
0060 / 0095	0060 QF	0060 PF	0060 HF	0060 CF	CSO 060	QF	PF	HF	CF	£69.70
0070	0070 QF	0070 PF	0070 HF	0070 CF	CSO 070	QF	PF	HF	CF	£77.20
0090 / 0125	0090 QF	0090 PF	0090 HF	0090 CF	CSO 090	QF	PF	HF	CF	£89.10
0120 / 0165	0120 QF	0120 PF	0120 HF	0120 CF	CSO 120	QF	PF	HF	CF	£117.00
0185 / 0220	0185 QF	0185 PF	0185 HF	0185 CF	CSO 185	QF	PF	HF	CF	£164.00

Puska

Housing	Element 3m	Element 1m	Element 0.01m	Element AC	STERLING code	(+Grade)				List Price
PM 10 H	10 PRO	10 PMO	10 PMM	10 PCA	CS 0056	P	R	S	A	£29.00
PM 13 H	13 PRO	13 PMO	13 PMM	13 PCA	CS 0076	P	R	S	A	£35.90
PM 20 H	20 PRO	20 PMO	20 PMM	20 PCA	CS 0106	P	R	S	A	£46.20
PM 33 H	33 PRO	33 PMO	33 PMM	33 PCA	CS 0186	P	R	S	A	£58.10
PM 60 H	60 PRO	60 PMO	60 PMM	60 PCA	CS 0306	P	R	S	A	£81.90
PM 85 H	85 PRO	85 PMO	85 PMM	85 PCA	CS 0476	P	R	S	A	£100.00
PM 130 H	130 PRO	130 PMO	130 PMM	130 PCA	CS 0706	P	R	S	A	£127.00
PM 170 H	170 PRO	170 PMO	170 PMM	170 PCA	CS 0946	P	R	S	A	£181.00
PM 250 H	250 PRO	250 PMO	250 PMM	250 PCA	CS 1506	P	R	S	A	£221.00
PM 400 H	400 PRO	400 PMO	400 PMM	400 PCA	CS 2406	P	R	S	A	£324.00

Pneumatech pre 2020 (For previous see ABAC pre 2013)

Housing	Element 1m	Element 0.01m	Element AC	STERLING code	(+Grade)				List Price
TF1	TF1 P	TF1 C	TF1 V	CSAM0045	R	S	A	£38.70	
TF2	TF2 P	TF2 C	TF2 V	CSAM0090	R	S	A	£42.20	
TF3	TF3 P	TF3 C	TF3 V	CSAM0125	R	S	A	£45.30	
TF4	TF4 P	TF4 C	TF4 V	CSAM0180	R	S	A	£52.30	
TF5	TF5 P	TF5 C	TF5 V	CSAM0290	R	S	A	£64.60	
TF6	TF6 P	TF6 C	TF6 V	CSAM0505	R	S	A	£84.60	
TF7	TF7 P	TF7 C	TF7 V	CSAM0685	R	S	A	£96.10	
TF8	TF8 P	TF8 C	TF8 V	CSAM0935	R	S	A	£122.00	
TF9	TF9 P	TF9 C	TF9 V	CSAM1295	R	S	A	£199.00	
TF10	TF10 P	TF10 C	TF10 V	CSAM1890	R	S	A	£213.00	
TF11	TF11 P	TF11 C	TF11 V	CSAM2430	R	S	A	£269.00	

Sullair

Housing	Element 1m	Element 0.01m	Element AC	STERLING code	(+Grade)			List Price
423/431/443	250024-423	250024-431	250024-443	CS009	AO	AA	ACS	£25.00
424/432/444	250024-424	250024-432	250024-444	CS017	AO	AA	ACS	£35.50
425/433/445	250024-425	250024-433	250024-445	CS030	AO	AA	ACS	£43.60
426/434/446	250024-426	250024-434	250024-446	CS058	AO	AA	ACS	£59.80
427/435/447	250024-427	250024-435	250024-447	CS145	AO	AA	ACS	£78.30
428/436/448	250024-428	250024-436	250024-448	CS220	AO	AA	ACS	£102.00
429/437/449	250024-429	250024-437	250024-449	CS330	AO	AA	ACS	£146.00
644/655/656	250024-644	250024-655	250024-656	CS430	AO	AA	ACS	£205.00
430/438/441	250024-430	250024-438	250024-441	CS620	AO	AA	ACS	£276.00

Ultrafilter / Donaldson Series 90

Housing	Element 25m	Element 1m	Element 0.1m	Element AC	Element 0.01m	STERLING code	(+Grade)					List Price
0001/0002	02/05 PE	02/05 FF	02/05 MF	02/05 AK	02/05 SMF	CS02/05	PE	FF	MF	AK	SMF	£33.00
0003/0004	03/05 PE	03/05 FF	03/05 MF	03/05 AK	03/05 SMF	CS03/05	PE	FF	MF	AK	SMF	£35.50
6	03/10 PE	03/10 FF	03/10 MF	03/10 AK	03/10 SMF	CS03/10	PE	FF	MF	AK	SMF	£36.40
9	04/10 PE	04/10 FF	04/10 MF	04/10 AK	04/10 SMF	CS04/10	PE	FF	MF	AK	SMF	£37.60
12	04/20 PE	04/20 FF	04/20 MF	04/20 AK	04/20 SMF	CS04/20	PE	FF	MF	AK	SMF	£40.30
18	05/20 PE	05/20 FF	05/20 MF	05/20 AK	05/20 SMF	CS05/20	PE	FF	MF	AK	SMF	£47.10
27	05/25 PE	05/25 FF	05/25 MF	05/25 AK	05/25 SMF	CS05/25	PE	FF	MF	AK	SMF	£52.10
36	07/25 PE	07/25 FF	07/25 MF	07/25 AK	07/25 SMF	CS07/25	PE	FF	MF	AK	SMF	£64.60
48	07/30 PE	07/30 FF	07/30 MF	07/30 AK	07/30 SMF	CS07/30	PE	FF	MF	AK	SMF	£74.60
72	10/30 PE	10/30 FF	10/30 MF	10/30 AK	10/30 SMF	CS10/30	PE	FF	MF	AK	SMF	£81.00
108	15/30 PE	15/30 FF	15/30 MF	15/30 AK	15/30 SMF	CS15/30	PE	FF	MF	AK	SMF	£102.00
144	20/30 PE	20/30 FF	20/30 MF	20/30 AK	20/30 SMF	CS20/30	PE	FF	MF	AK	SMF	£124.00
192	30/30 PE	30/30 FF	30/30 MF	30/30 AK	30/30 SMF	CS30/30	PE	FF	MF	AK	SMF	£162.00
288	30/50 PE	30/50 FF	30/50 MF	30/50 AK	30/50 SMF	CS30/50	PE	FF	MF	AK	SMF	£254.00

Donaldson DF range

Housing	Element 3m	Element 1m	Element 0.01m	Element AC	STERLING code	(+Grade)				List Price
DF 0035	DF 0035 P	DF 0035 V	DF 0035 S	DF 0035 A	CSDF0035	P	V	S	A	£70.40
DF 0070	DF 0070 P	DF 0070 V	DF 0070 S	DF 0070 A	CSDF0070	P	V	S	A	£88.60
DF 0120	DF 0120 P	DF 0120 V	DF 0120 S	DF 0120 A	CSDF0120	P	V	S	A	£104.00
DF 0210	DF 0210 P	DF 0210 V	DF 0210 S	DF 0210 A	CSDF0210	P	V	S	A	£126.00
DF 0320	DF 0320 P	DF 0320 V	DF 0320 S	DF 0320 A	CSDF0320	P	V	S	A	£149.00
DF 0450	DF 0450 P	DF 0450 V	DF 0450 S	DF 0450 A	CSDF0450	P	V	S	A	£196.00
DF 0600	DF 0600 P	DF 0600 V	DF 0600 S	DF 0600 A	CSDF0600	P	V	S	A	£218.00
DF 0750	DF 0750 P	DF 0750 V	DF 0750 S	DF 0750 A	CSDF0750	P	V	S	A	£237.00
DF 1100	DF 1100 P	DF 1100 V	DF 1100 S	DF 1100 A	CSDF1100	P	V	S	A	£316.00

Walker Filtration (Aluminium end caps - factory order req'd)

Housing	Element 5m	Element 1m	Element 0.01m	Element AC	STERLING code	(+Grade)				List Price
A20	E361 X5	E361 X1	E361 XA	E361 AC	CSWE361	X5	X1	XA	AC	£69.60
A30	E371 X5	E371 X1	E371 XA	E371 AC	CSWE371	X5	X1	XA	AC	£71.20
A55	E511 X5	E511 X1	E511 XA	E511 AC	CSWE511	X5	X1	XA	AC	£79.70
A76	E711 X5	E711 X1	E711 XA	E711 AC	CSWE711	X5	X1	XA	AC	£115.00
A105	E811 X5	E811 X1	E811 XA	E811 AC	CSWE811	X5	X1	XA	AC	£134.00
A106	E731 X5	E731 X1	E731 XA	E731 AC	CSWE731	X5	X1	XA	AC	£140.00
A126	E821 X5	E821 X1	E821 XA	E821 AC	CSWE821	X5	X1	XA	AC	£161.00
A153/A203	E831 X5	E831 X1	E831 XA	E831 AC	CSWE831	X5	X1	XA	AC	£167.00
A205	E851 X5	E851 X1	E851 XA	E851 AC	CSWE851	X5	X1	XA	AC	£222.00
A250/A305	E1251X5	E1251X1	E1251XA	E1251AC	CSWE1251	X5	X1	XA	AC	£336.00
A306	E1261 X5	E1261 X1	E1261 XA	E1261 AC	CSWE1261	X5	X1	XA	AC	£424.00
A308	E1281 X5	E1281 X1	E1281 XA	E1281 AC	CSWE1281	X5	X1	XA	AC	£433.00

Walker Filtration OWA Alfa

Housing	Element 5m	Element 1m	Element 0.01m	Element AC	STERLING code	(+Grade)				List Price
E0304	E0304 X5	E0304 X1	E0304 XA	E0304 AC	CSWA304	X5	X1	XA	AC	£52.90
E0305	E0305 X5	E0305 X1	E0305 XA	E0305 AC	CSWA305	X5	X1	XA	AC	£58.70
EO406	EO406 X5	EO406 X1	EO406 XA	EO406 AC	CSWA406	X5	X1	XA	AC	£61.70
EO407	EO407 X5	EO407 X1	EO407 XA	EO407 AC	CSWA407	X5	X1	XA	AC	£66.50
E0413	E0413 X5	E0413 X1	E0413 XA	E0413 AC	CSWA413	X5	X1	XA	AC	£75.80
E0613	E0613 X5	E0613 X1	E0613 XA	E0613 AC	CSWA613	X5	X1	XA	AC	£87.10
E0620	E0620 X5	E0620 X1	E0620 XA	E0620 AC	CSWA620	X5	X1	XA	AC	£112.00
E0625	E0625 X5	E0625 X1	E0625 XA	E0625 AC	CSWA625	X5	X1	XA	AC	£123.00
E0730	E0730 X5	E0730 X1	E0730 XA	E0730 AC	CSWA730	X5	X1	XA	AC	£141.00
E0830	E0830 X5	E0830 X1	E0830 XA	E0830 AC	CSWA830	X5	X1	XA	AC	£151.00
E0860	E0860 X5	E0860 X1	E0860 XA	E0860 AC	CSWA860	X5	X1	XA	AC	£278.00
E1140	E1140 X5	E1140 X1	E1140 XA	E1140 AC	CSWA1140	X5	X1	XA	AC	£315.00
E1160	E1160 X5	E1160 X1	E1160 XA	E1160 AC	CSWA1160	X5	X1	XA	AC	£377.00
E1175	E1175 X5	E1175 X1	E1175 XA	E1175 AC	CSWA1175	X5	X1	XA	AC	£493.00

Worthington (Pre 2020)

Housing	Element 1m	Element 0.01m	Element AC	STERLING code	(+Grade)			List Price
FILTER 45	45 P	45 C	45 V	CSAM0045	R	S	A	£38.70
FILTER 90	90 P	90 C	90 V	CSAM0090	R	S	A	£42.20
FILTER 125	125 P	125 C	125 V	CSAM0125	R	S	A	£45.30
FILTER 180	180 P	180 C	180 V	CSAM0180	R	S	A	£52.30
FILTER 290	290 P	290 C	290 V	CSAM0290	R	S	A	£64.60
FILTER 505	505 P	505 C	505 V	CSAM0505	R	S	A	£84.60
FILTER 685	685 P	685 C	685 V	CSAM0685	R	S	A	£96.10
FILTER 935	935 P	935 C	935 V	CSAM0935	R	S	A	£122.00
FILTER 1295	1295 P	1295 C	1295 V	CSAM1295	R	S	A	£199.00
FILTER 1890	1890 P	1890 C	1890 V	CSAM1890	R	S	A	£213.00
FILTER 2430	2430 P	2430 C	2430 V	CSAM2430	R	S	A	£269.00

Zander (Old)

Housing	Element 3m	Element 1m	Element 0.01m	Element AC	STERLING code	(+Grade)			List Price	
G2	1030 V	1030 Z	1030 X	1030 A	CS1030	V	Z	X	A	£21.50
G3	1050 V	1050 Z	1050 X	1050 A	CS1050	V	Z	X	A	£25.00
G5	1070 V	1070 Z	1070 X	1070 A	CS1070	V	Z	X	A	£30.70
G7	1140 V	1140 Z	1140 X	1140 A	CS1140	V	Z	X	A	£39.60
G9	2010 V	2010 Z	2010 X	2010 A	CS2010	V	Z	X	A	£49.90
G11	2020 V	2020 Z	2020 X	2020 A	CS2020	V	Z	X	A	£64.80
G12	2030 V	2030 Z	2030 X	2030 A	CS2030	V	Z	X	A	£84.80
G13	2050 V	2050 Z	2050 X	2050 A	CS2050	V	Z	X	A	£109.00
G14	3050 V	3050 Z	3050 X	3050 A	CS3050	V	Z	X	A	£156.00
G17	3075 V	3075 Z	3075 X	3075 A	CS3075	V	Z	X	A	£189.00
G19	5075 V	5075 Z	5075 X	5075 A	CS5075	V	Z	X	A	£278.00

Zander GL Range

Housing	Element 3m	Element 1m	Element 0.01m	Element AC	STERLING code	(+Grade)			List Price	
CP1008	CP1008VL	CP1008ZL	CP1008XL	CP1008A	CSEV010	PF	AO	AA	AC	£48.20
CP2010	CP2010VL	CP2010ZL	CP2010XL	CP2010A	CSEV015	PF	AO	AA	AC	£56.90
CP2020	CP2020VL	CP2020ZL	CP2020XL	CP2020A	CSEV020	PF	AO	AA	AC	£64.80
CP3025	CP3025VL	CP3025ZL	CP3025XL	CP3025A	CSEV025	PF	AO	AA	AC	£71.50
CP3040	CP3040VL	CP3040ZL	CP3040XL	CP3040A	CSEV030	PF	AO	AA	AC	£79.20
CP4040	CP4040VL	CP4040ZL	CP4040XL	CP4040A	CSEV035	PF	AO	AA	AC	£113.00
CP4050	CP4050VL	CP4050ZL	CP4050XL	CP4050A	CSEV040	PF	AO	AA	AC	£136.00
CP4065	CP4065VL	CP4065ZL	CP4065XL	CP4065A	CSEV045	PF	AO	AA	AC	£163.00
CP5065	CP5065VL	CP5065ZL	CP5065XL	CP5065A	CSEV050	PF	AO	AA	AC	£184.00
CP5080	CP5080VL	CP5080ZL	CP5080XL	CP5080A	CSEV055	PF	AO	AA	AC	£262.00

Refrigerated Air Dryers



effective, efficient & economical
quality without compromise



RD25 - RD1000 (12 sizes)

25 to 1000 scfm / 0.65 to 26.8 m³/min

STERLING
separation



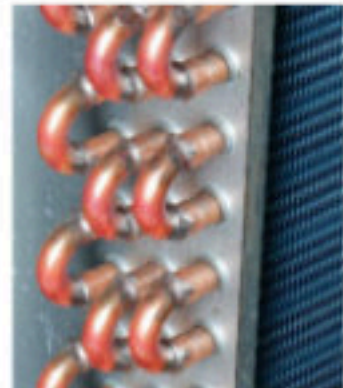
● General characteristics of the dryers



- Complies with all relevant industry and national standards
- Designed for high efficiency and easy maintenance
- Dewpoint range down to 2°C
- Rugged powder-coated exterior finish
- Great accessibility for easy maintenance
- All popular sizes held in stock for immediate delivery

● 3 in 1 aluminium plate fin type heat exchanger

- >5 times transfer area compared to shell/tube type
- Efficient and rapid heat transfer
- Compact size
- Long life guaranteed



● World-standard refrigeration system



- Component brands include Danfoss & Panasonic (model dependent)
- Rugged and fully enclosed
- Low noise & vibration at unobtrusive levels
- Using environmentally friendly R410a, R134a & R407c refrigerants (model dependent)

● Full feature control system

- High- and low-pressure protection on refrigerant circuit
- Over current, over- & under-voltage protection
- Phase loss and compressor reverse protection
- Optional remote operation support via MODBUS





Premium Air Filtration Option

Dryer + filters package extends your dryer warranty!

AirDry refrigerate dryers can be supplied either with or without STERLING's PREMIUM line filters. Select the (F) option, and we'll supply our PREMIUM filters, complete with quality float drain and differential pressure gauge, with the dryer.

For more information, please visit our website - <https://www.sterlingsep.com/premium-filtration>



AirDRY specifications and dimensions

Model	Total Input power	Capacity		Compatibility Compressor kW	Product dims (mm)			Package dims (mm)		
		m3/m	scfm		w	d	h	w	d	h
RD25 (F)	0.22	0.65	25	4	400	560	730	580	430	750
RD45 (F)	0.37	1.2	45	7.5	40	560	730	580	430	750
RD90 (F)	0.45	2.5	90	15	520	640	890	660	550	910
RD130 (F)	0.86	3.6	130	22	520	640	890	660	550	910
RD180 (F)	1.1	5	180	22-30	540	700	1000	720	570	1130
RD250 (F)	1.3	6.8	250	37	540	700	1000	720	570	1150
RD320 (F)	1.9	8.5	320	45	610	900	1070	910	650	1200
RD400 (F)	2.9	10.9	400	55	610	900	1070	910	650	1200
RD465 (F)	2.9	12.8	465	55-75	610	900	1070	910	650	1200
RD580 (F)	3.42	16	580	75-90	1170	920	1420	1150	1370	1760
RD800 (F)	3.83	22	800	90-110	1170	920	1420	1150	1370	1760
RD1000 (F)	4.48	26.8	1000	132-160	1170	920	1420	1150	1370	1760

Dryer Selection Tables - according to ISO 7183

Inlet Air Temperature Correction Factor

Inlet Air Temp (°C)	30	35	38	40	45	50	55	60
Change Factor	1.3	1.1	1.0	0.94	0.78	0.64	0.53	0.46

Inlet Pressure Correction Factor - RD25 to RD465 are rated to 16 bar. Larger sizes rated to 10 bar

Inlet pressure (Bar)	4	5	6	7	8	9	10	12	14	16
Change Factor	0.63	0.75	0.88	1.0	1.04	1.07	1.1	1.16	1.22	1.25

Ambient Temperature Correction Factor

Ambient air °C	20	25	30	35	38	40	45	50
Change Factor	1.16	1.12	1.08	1.03	1.0	0.98	0.8	0.7

Refrigerated compressed air dryers

Product code	Capacity cfm (m3/min)	Description	Supplied filters	Max working pressure	Input power kW	Refrigerant		Width (mm)	Depth (mm)	Height (mm)	Weight (Kg)	Air Connections	Price
						Type	KG						
RD25-F	25 (0.7)	With Filters	0.01 & 1micron - 1/2"	16 bar	0.22	R134A	0.25	400	560	730	32	1"	£930
RD25		Without Filters	none										£840
RD45-F	45 (1.3)	With Filters	0.01 & 1micron - 1/2"	16 bar	0.37	R134A	0.3	400	560	730	34	1"	£1,126
RD45		Without Filters	none										£1,035
RD90-F	90 (2.5)	With Filters	0.01 & 1micron - 3/4"	16 bar	0.45	R134A	0.5	520	640	890	50	1"	£1,408
RD90		Without Filters	none										£1,317
RD130-F	130 (3.7)	With Filters	0.01 & 1micron - 1"	16 bar	0.86	R410A	0.56	520	640	890	55	1"	£1,790
RD130		Without Filters	none										£1,680
RD180-F	180 (5.1)	With Filters	0.01 & 1micron - 1 1/2"	16 bar	1.1	R410A	0.65	540	700	1000	67	1 1/2"	£2,080
RD180		Without Filters	none										£1,942
RD250-F	250 (7.1)	With Filters	0.01 & 1micron - 1 1/2"	16 bar	1.3	R410A	1.1	540	700	1000	70	1 1/2"	£3,440
RD250		Without Filters	none										£3,150
RD320-F	320 (9.1)	With Filters	0.01 & 1micron - 2"	16 bar	1.9	R410A	1.3	610	900	1070	90	2"	£3,616
RD320		Without Filters	none										£3,311
RD400-F	400 (11.3)	With Filters	0.01 & 1micron - 2"	16 bar	2.9	R410A	2.3	610	900	1070	100	2"	£4,240
RD400		Without Filters	none										£3,950
RD465-F	465 (13.2)	With Filters	0.01 & 1micron - 2"	16 bar	2.9	R410A	2.3	610	900	1070	100	2"	£4,632
RD465		Without Filters	none										£4,280
RD580-F	580 (16.4)	With Filters	0.01 & 1micron - 2 1/2"	10 bar	3.42	R407C	3.5	1170	920	1420	273	DN65	£6,840
RD580		Without Filters	none										£6,440
RD800-F	800 (22.7)	With Filters	0.01 & 1micron - 2 1/2"	10 bar	3.83	R407C	4.6	1170	920	1420	278	DN65	£8,320
RD800		Without Filters	none										£7,920
RD1000-F	1000 (28.3)	With Filters	0.01 & 1micron - 3"	10 bar	4.48	R407C	5.6	1170	920	1420	290	DN80	£9,366
RD1000		Without Filters	none										£8,916

Please Note:

Filters are for external mounting. Where dryer has flanged outlet connection, a flange-to-thread adaptor is provided.

Operating temperatures. Maximum compressed air inlet temp 60°C. Ambient operating range 5°C to 50°C

Re-sellers please note that these are our recommended list prices. Please refer to STERLING if you need to verify your distributor discount and payment terms

Dryer selection tables - calculated according to ISO7183

Compressed air inlet temperature correction coefficient

Inlet air temperature (°C)	30	35	38	40	45	50	55	60
Change factor	1.3	1.1	1.0	0.94	0.78	0.64	0.53	0.46

Compressed air inlet pressure correction coefficient

RD580 and larger sizes are not rated over 10bar

Inlet pressure (bar)	4	5	6	7	8	9	10	12	14	16
Change factor	0.63	0.75	0.88	1	1.04	1.07	1.1	1.16	1.22	1.25

Ambient temperature correction factor

Ambient air temp (°C)	20	25	30	35	38	40	45	50
Change factor	1.16	1.12	1.08	1.03	1.0	0.98	0.8	0.7

Condensate testing

STERLING's laboratory is equipped with high quality modern equipment capable of measuring the levels of oil in water to an accuracy of +/- 1 part per million.

If you'd like us to run a test for you or your customer either to check an installation or prior to quoting a new system, we'll need a representative sample of at least 500ml of condensate, and some details about the installation if applicable. For more information, please contact sales.

The service costs £50 which includes your printed report.

Please note: This facility is offered as a service to customers, which will be performed correctly and reported accurately. However, we do not claim to operate a certified laboratory and if your requirement is for legal or similar purposes we recommend that you seek external and independent advice.

Training

STERLING's team has amassed many years of real world experience in condensate management; that's practical experience that you can't buy - yet it's important because there are so many variables to deal with.

We offer training courses on condensate management in general, and on our products in particular at a level to suit your team. For a general understanding of the topic and to gain a good awareness of the key to a good and trouble-free system should take no more than 2 to 3 hours

We'll come to you by appointment, and we're happy either to work with one individual or a group, whether sales or service biased and we'll tailor the content to suit.

Training services are usually free of charge to STERLING customers

TERMS AND CONDITIONS OF SALE

Application and entire agreement

1. These Terms and Conditions will apply to the purchase of goods (**Goods**) by the buyer (**you or Customer**) from Sterling Separation Ltd a company registered in England and Wales under number 05844056 whose registered office is at 24 Longford Ind Est, Longford Rd, Bridgetown, Cannock, WS110DG (**we or us or Supplier**).
2. These Terms and Conditions will be deemed to have been accepted by you when you accept them or a quotation for them or from the date of any delivery of the Goods (whichever happens earlier) and will constitute the entire agreement between us and you.
3. These Terms and Conditions and the quotation (together, **the Contract**) apply to the purchase and sale of any Goods between us and you, to the exclusion of any other terms that you try to impose or incorporate, or which are implied by trade, custom, practice or course of dealing.

Interpretation

4. A "business day" is any day other than Saturday, Sunday or bank holiday in England and Wales.
5. The headings in these Terms and Conditions are for convenience only and will not affect their interpretation.
6. Words imparting the singular number include the plural and vice-versa.

Goods

7. The description of the Goods is set out in our sales documentation, unless expressly changed in our quotation. In accepting the quotation, you acknowledge that you have not relied upon any statement, promise or other representations about the Goods by us. Descriptions of the Goods set out in our sales documentation are intended as a guide only.
8. We can make any changes to the specification of the Goods which are required to conform to any applicable safety or other statutory or regulatory requirements.

Price

9. The price (**Price**) of the Goods is set out in our quotation or published price list current at the date of your order or such other price as we may agree in writing.
10. If the cost of the Goods to us increases due to any factor beyond our control including, but not limited to, material costs, labour costs, alteration of exchange rates or duties, or changes to delivery rates, we can increase the Price prior to delivery subject to a minimum 30 days' notice.
11. Any increase in the Price under the clause above will only take place after we have notified you about it.
12. You may be entitled to discounts. Any and all discounts will be at our discretion and will be agreed in writing at or before the time of ordering
13. The listed Price does not include fees for packaging and transportation / delivery.
14. The listed Price does not include any applicable VAT and other taxes or levies which are imposed or charged by any competent authority.

Cancellation and alteration

15. Details of the Goods as described in the clause above (Goods) and set out in our sales documentation are subject to alteration without notice and are not a contractual offer to sell the Goods which is capable of acceptance.
16. The quotation (including any non-standard price negotiated in accordance with the clause on Price (above) is valid for a period of **30** days only from the date shown in it unless expressly withdrawn by us at an earlier time or extended beyond **30** days in writing.
17. Either party can cancel the order for any reason prior to your acceptance (or rejection) of the quotation. Certain items that are manufactured to order (i.e.: not normally held on our stock) will be subject to a cancellation charge should production have begun before cancellation is received

Payment

18. We will invoice you for the Price either: On the date of dispatch from our premises
 - a. on or at any time after delivery of the Goods; or
 - b. where the Goods are to be collected by you or where you wrongfully do not take delivery of the Goods, at any time after we have notified you that the Goods are ready for collection or we have tried to deliver them.

19. You must pay the Price by the last day of the calendar month following the date of our invoice or otherwise according to any credit terms agreed between us in writing.
20. If you do not pay within the period set out above, we may suspend any further deliveries to you and without limiting any of our other rights or remedies for statutory interest, charge you interest at the rate of 5% per annum above the base rate of the Bank of England from time to time on the amount outstanding until you pay in full.
21. Time for payment will be of the essence of the Contract between us and you.
22. All payments must be made in British Pounds unless otherwise agreed with you in writing.
23. Both parties must pay all amounts due under these Terms and Conditions in full without any deduction or withholding except as required by law and neither party is entitled to assert any credit, set-off or counterclaim against the other in order to justify withholding payment of any such amount in whole or in part.

Delivery

24. We will arrange for the delivery of the Goods to the address specified in our quotation, or your order or to another location we agree in writing.
25. If you do not specify a delivery address or if we both agree, you must collect the Goods from our premises.
26. Subject to the specific terms of any special delivery service, delivery can take place at any time of the day and must normally be accepted at any time between 8 am to 5 pm.
27. If you do not take delivery of the Goods we may, at our discretion and without prejudice to any other rights:
 - a. Store or arrange for the storage of the Goods and will charge you for all associated costs and expenses including, but not limited to, transportation, storage and insurance; and / or
 - b. Make arrangements for the redelivery of the Goods and will charge you for the costs of such redelivery; and/or
 - c. After 10 business days, resell or otherwise dispose of part or all of the Goods and charge you for any shortfall below the price of the Goods.
28. If redelivery is not possible as set out above, you must collect the Goods from our premises and will be notified of this. We can charge you for all associated costs including, but not limited to, storage and insurance.
29. Any dates quoted for delivery are approximate only, and the time of delivery is not of the essence. We will not be liable for any delay in delivery of the Goods that is caused by a circumstance beyond our control or your failure to provide us with adequate delivery instructions or any other instructions that are relevant to the supply of the Goods.
30. We can deliver the Goods by instalments, which will be invoiced and paid for separately. Each instalment is a separate contract. Any delay in delivery or defect in an instalment will not entitle you to cancel any other instalment.

Inspection and acceptance of Goods

31. You must inspect the Goods on delivery or collection.
32. If you identify any damages or shortages, you must inform us in writing within 48 hours of delivery, providing details.
33. Other than by agreement, we will only accept returned Goods if we are satisfied that those Goods are defective and if required, have carried out an inspection.
34. Subject to your compliance with this clause and/or our agreement, you may return the Goods and we will, as appropriate, repair, or replace, or refund the Goods or part of them.
35. We will be under no liability or further obligation in relation to the Goods if:
 - a. if you fail to provide notice as set above; and/or
 - b. you make any further use of such Goods after giving notice under the clause above relating to damages and shortages; and/or
 - c. the defect arises because you did not follow our oral or written instructions about the storage, commissioning, installation, use and maintenance of the Goods; and/or
 - d. the defect arises from normal wear and tear of the Goods; and/or
 - e. the defect arises from misuse or alteration of the Goods, negligence, wilful damage or any other act by you, your employees or agents or any third parties.
36. You bear the risk and cost of returning the Goods.
37. Acceptance of the Goods will be deemed to be upon inspection of them by you and in any event within 5 days after delivery.

Risk and title

38. The risk in the Goods will pass to you on completion of delivery.
39. Title to the Goods will not pass to you until we have received payment in full (in cash or cleared funds) for: (a) the Goods and/or (b) any other goods or services that we have supplied to you in respect of which payment has become due.
40. Until title to the Goods has passed to you, you must (a) hold the Goods on a fiduciary basis as our bailee; and/or (b) store the goods separately and not remove, deface or obscure any identifying mark or packaging on or relating to the Goods; and/or (c) keep the Goods in satisfactory condition and keep them insured against all risks for their full price from the date of delivery.
41. As long as the Goods have not been resold, or irreversibly incorporated into another product, and without limiting any other right or remedy we may have, we can at any time ask you to deliver up the Goods and, if you fail to do so promptly, enter any of your premises or of any third party where the Goods are stored in order to recover them.

Termination

42. We can terminate the sale of Goods under the Contract where:
- you commit a material breach of your obligations under these Terms and Conditions;
 - you are or become or, in our reasonable opinion, are about to become the subject of a bankruptcy order or take advantage of any other statutory provision for the relief of insolvent debtors;
 - you enter into a voluntary arrangement under Part 1 of the Insolvency Act 1986, or any other scheme or arrangement is made with your creditors; or
 - you convene any meeting of your creditors, enter into voluntary or compulsory liquidation, have a receiver, manager, administrator or administrative receiver appointed in respect of your assets or undertakings or any part thereof, any documents are filed with the court for the appointment of an administrator, notice of intention to appoint an administrator is given by you or any of your directors or by a qualifying floating charge holder (as defined in para. 14 of Schedule B1 of the Insolvency Act 1986), a resolution is passed or petition presented to any court for the winding up of your affairs or for the granting of an administration order, or any proceedings are commenced relating to your insolvency or possible insolvency.

Limitation of liability

43. Our liability under the Contract, and in breach of statutory duty, and in tort, misrepresentation or otherwise will be limited to this section.
44. Subject to the clauses above on Inspection and Acceptance and Risk and Title, all warranties, conditions or other terms implied by statute or common law (save for those implied by Section 12 of the Sale of Goods Act 1979) are excluded to the fullest extent permitted by law.
45. If we do not deliver the Goods, our liability is limited, subject to the clause below, to the costs and expenses incurred by you in obtaining replacement goods of similar description and quality in the cheapest market available, less the price of the Goods.
46. Our total liability will not, in any circumstances, exceed the total amount of the Price payable by you.
47. We will not be liable (whether caused by our employees, agents or otherwise) in connection with the Goods, for:
- any indirect, special or consequential loss, damage, costs, or expenses; and/or
 - any loss of profits; loss of anticipated profits; loss of business; loss of data; loss of reputation or goodwill; business interruption; or, other third party claims; and/or
 - any failure to perform any of our obligations if such delay or failure is due to any cause beyond our reasonable control; and/or
 - any losses caused directly or indirectly by any failure or breach by you in relation to your obligations; and/or
 - any loss relating to the choice of the Goods and how they will meet your purpose or the use by you of the Goods supplied.
48. The exclusions of liability contained within this clause will not exclude or limit our liability for death or personal injury caused by our negligence; or for any matter for which it would be illegal for us to exclude or limit our liability; and for fraud or fraudulent misrepresentation.

Communications

49. All notices under these Terms and Conditions must be in writing and signed by, or on behalf of, the party giving notice (or a duly authorised officer of that party).
50. Notices will be deemed to have been duly given:
- when delivered, if delivered by courier or other messenger (including registered mail) during the normal business hours of the recipient;
 - when sent, if transmitted by fax or email and a successful transmission report or return receipt is generated;
 - on the fifth business day following mailing, if mailed by national ordinary mail; or
 - on the tenth business day following mailing, if mailed by airmail.
51. All notices under these Terms and Conditions must be addressed to the most recent address, email address or fax number notified to the other party.

Data protection

52. When providing the Goods to the Buyer, the Seller may gain access to and/or acquire the ability to transfer, store or process personal data of employees of the Buyer.
53. The parties agree that where such processing of personal data takes place, the Buyer shall be 'data controller' and the Seller shall be the 'data processor' as defined in the General Data Protection Regulation (GDPR) as may be amended, extended and/or re-enacted from time to time.
54. For the avoidance of doubt, 'Personal Data', 'Processing', 'Data Controller', 'Data Processor' and 'Data Subject' shall have the same meaning as in the GDPR.
55. The Seller shall only Process Personal Data to the extent reasonably required to enable it to provide the Goods as mentioned in these terms and conditions or as requested by and agreed with the Buyer, shall not retain any Personal Data longer than necessary for the Processing and refrain from Processing any Personal Data for its own or for any third party's purposes.
57. The Seller shall not disclose Personal Data to any third parties other than employees, directors, agents, subcontractors or advisors on a strict "need-to-know" basis and only under the same (or more extensive) conditions as set out in these terms and conditions or to the extent required by applicable legislation and/or regulations.
57. The Seller shall implement and maintain technical and organisational security measures as are required to protect Personal Data Processed by the Seller on behalf of the Buyer. Further information about the Seller's approach to data protection are specified in its Data Protection Policy, which can be found on our website. For any enquiries or complaints regarding data privacy, you can contact the IT and Administration Manager at the following e-mail address: admin@sterlingsep.com.

Circumstances beyond the control of either party

59. Neither party shall be liable for any failure or delay in performing their obligations where such failure or delay results from any cause that is beyond the reasonable control of that party. Such causes include, but are not limited to: industrial action, civil unrest, fire, flood, storms, earthquakes, acts of terrorism, acts of war, governmental action or any other event that is beyond the control of the party in question.

No Waiver

60. No waiver by us of any breach of these Terms and Conditions by you shall be considered as a waiver of any subsequent breach of the same or any other provision.

Severance

61. If one or more of these Terms and Conditions is found to be unlawful, invalid or otherwise unenforceable, that / those provisions shall be deemed severed from the remainder of these Terms and Conditions (which will remain valid and enforceable).

Law and jurisdiction

62. This Agreement shall be governed by and interpreted according to the law of England and all disputes arising under the Agreement (including non-contractual disputes or claims) shall be subject to the exclusive jurisdiction of the English courts.

Company details

Trading Address:

STERLING Separation Ltd,
Unit 24 Longford Industrial Estate,
Longford Rd,
Bridgtown,
Cannock,
WS11 0DG

Phone: +44(0)1543 502010

email: sales@sterlingsep.com

web: www.sterlingsep.com

Company Registration number: 5844056

VAT number: GB 897149564

Registered address:

Stowegate House, Lombard St, Lichfield, Staffs, WS13 6DP

Banking details:

Bank - HSBC

Sort code: 40-28-18

Account number: 91780395

BIC: HBUKGB4138F

IBAN: GB75HBUK40281891780395

We've prepared this document carefully, but it's possible that errors may have got through our checks. So, we reserve the right to review and possibly refuse orders based on incorrect information. We will not be held responsible for costs incurred due to errors in this list, nor for incorrect use of it. We urge users to check prices and specifications directly with us if in any doubt.